

Nottingham Playhouse presents

Sleeping Beauty



Visual Story

NOTTINGHAM
PLAYHOUSE



Supported using public funding by
**ARTS COUNCIL
ENGLAND**

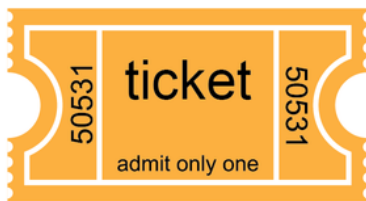
Welcome to Sleeping Beauty at Nottingham Playhouse



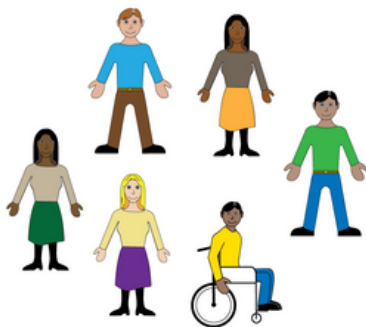
You are visiting a theatre called Nottingham Playhouse.



In the entrance you will see our Box Office.



This is where people buy or collect tickets.



Sometimes there are lots of people here.

The Foyer and chill-out space



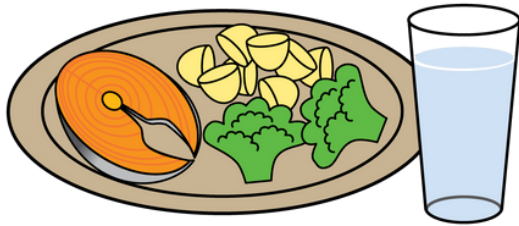
People wait to see the show in the foyers.

This is what the foyer looks like.



If you want to sit somewhere quiet before, during or after the show then you can use the chill-out space.

Refreshments



There are bars on the upper and lower foyers. There is also a bar and seating area in the room next to Box Office. You can buy food and drinks here.



This is what the bars look like.

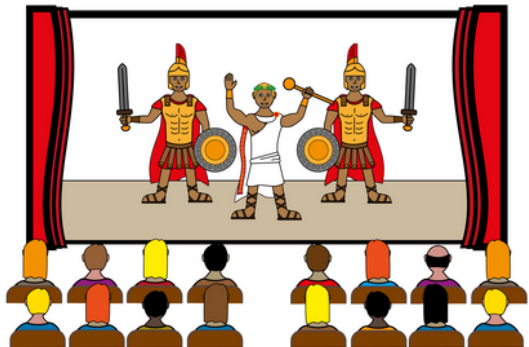
The Main Stage



The auditorium is where you will sit to watch Sleeping Beauty. The Welcome Team will help you find your seat.



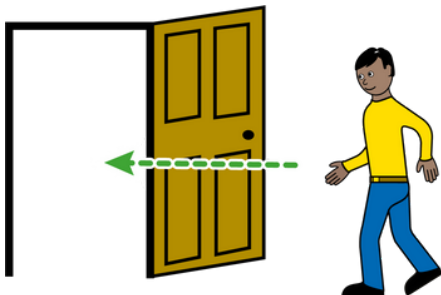
This is what the stage will look like.



When the show starts, the curtain will go up and you will see the characters performing on the stage.



It is okay to get up out of your seat if you need to move around. You can leave the room at any time and come back in when you are ready.



After the show has finished you can leave the auditorium when you are ready.

We are looking forward to your visit to Nottingham Playhouse. When you are here, you are going to see a panto called Sleeping Beauty.

The King and Queen hold a birthday party for their baby daughter, Princess Rose. But they did not invite the fairy Maleficent. Maleficent casts a spell that one day Princess Rose would prick her finger and die but Fairy Lights reverses the spell. They will actually sleep for 100 years instead. The Princess leaves the castle and hides away from Maleficent for 17 years for her safety.

On Princess Roses 18th birthday, Prince Albert gifts her a spinning wheel as he is tricked by Maleficent. Maleficent casts a trance spell on everybody and by a prick of Princess Roses finger the whole kingdom falls asleep for 100 years.

Maleficent then kidnaps the King and takes him to the desert. Everyone sets off to rescue him. But it is another trick. Maleficent sends her dragon to stop them.

With the help of the Fairy Lights and Princess Rose, the dragon is defeated.

The Prince and Princess marry, and they all live happily ever after.

The play will last about 2 hours and 30 minutes. When you walk into the performance space the lights will be on. There will be chairs to sit on. Theatre staff will remind you to turn off your mobile phone or put it on silent.

The Actors

Here are the actors in Sleeping Beauty. There are 7 actors in the play.

Here they are in and out of costume:

OUT OF COSTUME



IN COSTUME



John Elkington

This is John. They play Nelly the Nanny. They will be singing and dancing in the panto.



Danny Hendrix

This is Danny. They play Teddy the Bear. They will be singing and dancing in the panto.



Charis Alexandra

This is Charis. They play Fairy Lights. They will be singing and dancing in the panto.



Yazmin King

This is Yazmin. They play Princess Rose and the Queen. They will be singing and dancing in the panto.



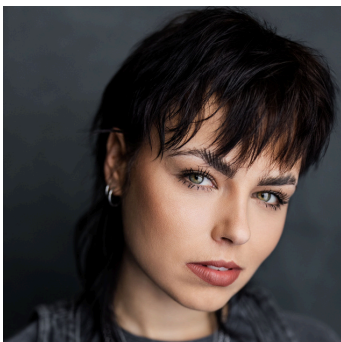
Seb Harwood

This is Seb. They play Prince Albert. They will be singing and dancing in the panto.



TJ Lloyd

This is TJ. They play the King. They will be singing and dancing in the panto.



Lara Sas

This is Lara. They play Maleficent. They will be singing and dancing in the panto.

Young Chorus

There will be a Young Chorus in the panto who will dance. The Young Chorus performing in your show will either be Team Dean or Team Torvill depending on what performance you attend.



Team Torvill



Team Dean



The Young Chorus play in the ensemble and sometimes look like this in costume with the rest of the cast.

The Story



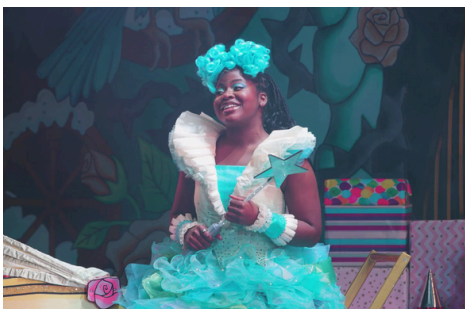
The story begins at the Princess Rose's first birthday party. The King, Queen, Fairy Lights and royal subjects are celebrating.



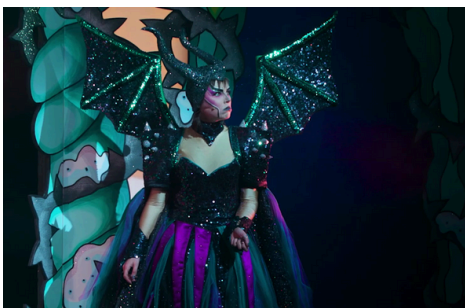
Fairy Lights uses her magic and Teddy the Bear becomes alive.



Nelly the Nanny, who looks after Princess Rose, arrives at the castle.



Gifts are given to Princess Rose.



Maleficent crashes the party. She is upset as she was not invited to the party.



Maleficent casts a spell so that before the age of 18, if Princess Rose pricks her finger on a spinning wheel and bleeds she will die.



Fairy Lights is asked to cast a spell to reverse it but she is unsure if she can compete with Maleficent's evil magic. She casts a sleeping spell instead to lessen the effects.



Everyone is scared. The curse can only be broken by a true love's kiss. The Princess is sent away for 17 years so Maleficent can't find her.



17 years later, Prince Albert arrives in Sherwoodshire. Searching for Princess Rose to marry. Unfortunately, the Queen got ill and died.



It is now Princess Rose's 18th birthday and the King is on his way to collect Princess Rose as it is now safe.



Princess Rose and Prince Albert meet for the first time. The Princess finds the Prince arrogant.



Maleficent has tracked down where the Princess is. She flirts with the Prince and tricks him into gifting the Princess a spinning wheel for her birthday.



Nelly the Nanny and Teddy the Bear need to make a birthday cake for Princess Rose. Fairy Lights makes a Royal Announcement, the King has come to collect Princess Rose.



Teddy the Bear is upset as he believes Princess Rose won't need him anymore now that she is turning 18.



The Prince gives the Princess the spinning wheel and everyone runs to warn her not to touch it.



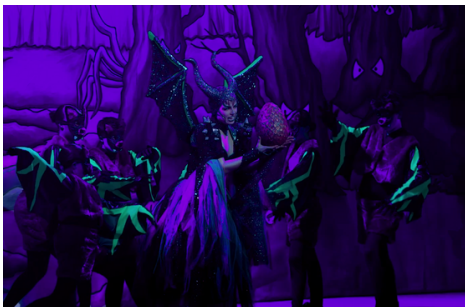
Everyone is worried. The Princess needs to leave for the castle immediately to escape Maleficent. The group splits into two so Maleficent cannot easily find them.



Nelly the Nanny, Prince Albert and Teddy the Bear stay behind a little longer to bake the birthday cake. It gets very messy as the icing machine doesn't work properly.



Fairy Lights, the King and Princess Rose travel through the forest. They are attacked by large insects. They are scared.



Maleficent enters with her group of bats and reveals her new dragon egg. Time is running out for her evil plan.



The King and Princess Rose arrive at the castle, only to find Maleficent is hiding there and casts a trance spell on everyone.



In a trance Princess Rose pricks her finger on the spinning wheel. Fairy Lights must now put the castle to sleep for 100 years.



She puts branches around the castle and the Prince must remember to come back for his true love, Princess Rose in 100 years time.



It is now the interval.

You will have a 20 minute interval. The Interval is a good time to use the bathroom or buy snacks or get a drink.



100 years has passed. The Princess needs to be awakened by a true love's kiss. The Prince must save Princess Rose.



The King kisses his daughter on the cheek and she awakens. Everyone is happy but Teddy, as he still thinks Princess Rose will abandon him now that she is older.



Maleficent appears and her dragon egg has hatched. She then kidnaps the King and takes him to the desert.



Everyone travels to the desert. The Prince and Princess share their first kiss.



Fairy Lights, Teddy and Nelly the Nanny are tired from travelling. They are ambushed by a cactus. They scream and run off.



Maleficent has the King in her lair. Everyone arrives at the lair. Maleficent has tricked them into being there all together and can now take revenge on them all.



The Princess and Fairy Lights defeat the dragon. Maleficent is forgiven. Fairy Lights finally gets her grown up wings.



Prince Albert and Princess Rose get married and everyone attends. Everyone is happy.

Interactive times during the show

During the panto the actors may ask the audience to join in.

The audience may clap or cheer after people sing.

They will ask the audience to say "hello" in the opening scene.

Teddy asks who can be the loudest in the audience. Audience members shout in response.

Teddy asks for a response to "nice to see ya to see ya nice". The audience tries to be as loud as they can.

Nelly the Nanny talks to the audience and the show lights come on so she can look. She gives out sweets to the audience.

Nelly the Nanny pranks the audience as baby Princess Rose 'wees' on stage. Water is projected out to the audience.

Maleficent asks the audience if they can trust her. "No" is what people shout.

Maleficent tricks the Prince into gifting the princess a spinning wheel, the Prince asks if he should he or shouldn't he take it, to the audience. This happens back and forth.

Nelly the Nanny finds an understudy in the audience and invites them on stage to sing.

Maleficent takes the King hostage. Back and forth Maleficent and the audience go "oh yes you will" and "oh no you wont".

The Cactus appears and the audience helps Fairy Lights, Teddy and Nanny by shouting where it is jumping.

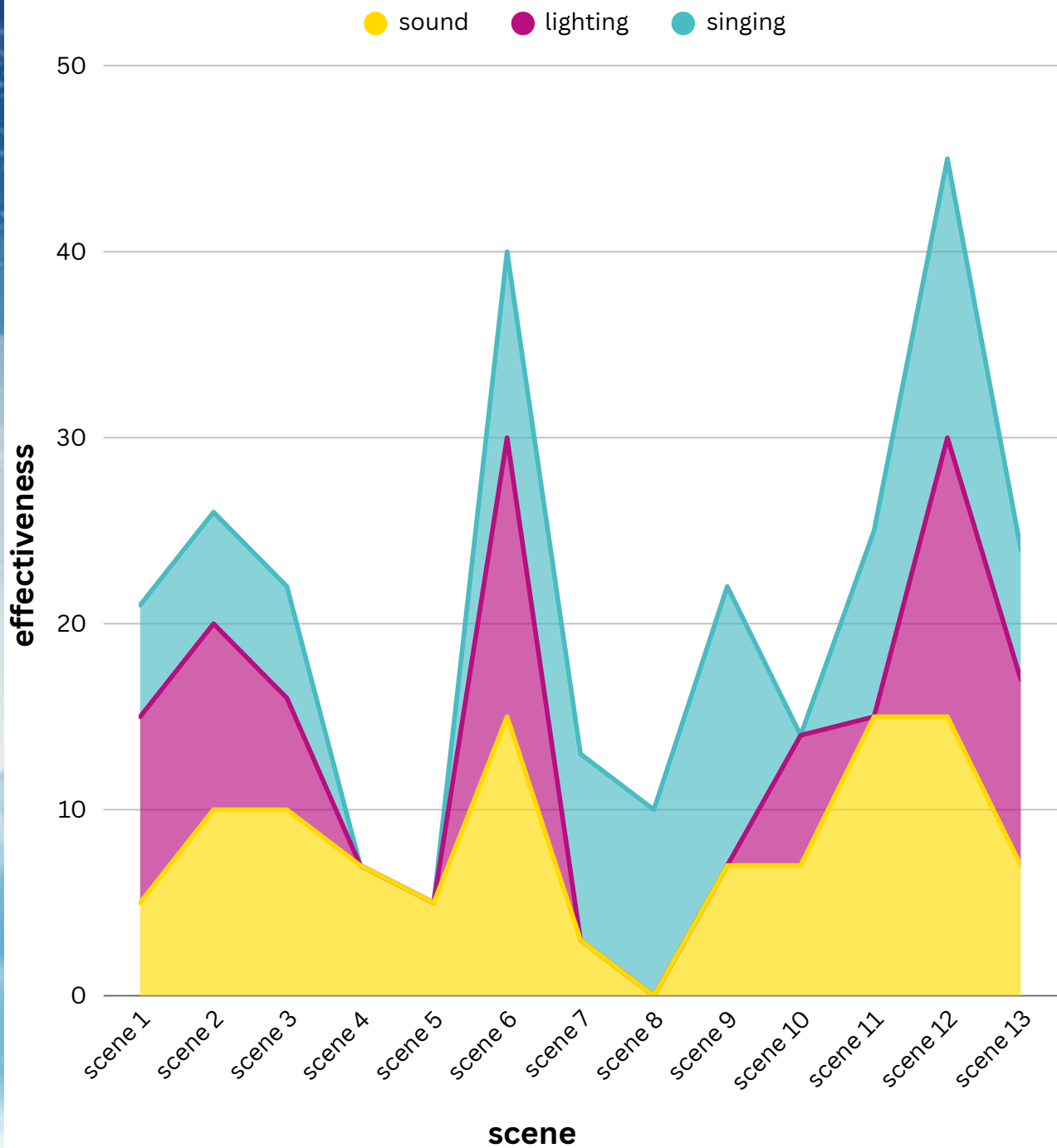
There will be cheering for the Band and shoutouts by Teddy the Bear.

Audience are asked to sing Teddy Bears Picnic and a game on stage.

People will clap at the end of the show when the cast bows.

Sonic Story

During the panto there will be effects, lighting changes and music.



Sensory Triggers

Events or stimuli that are sensed by our five primary senses and can cause a strong reaction. For example, sudden lighting changes or unexpected sounds.

Opening scene

Cast singing

Maleficent enters the stage, organ music plays, thunder sounds and lighting changes.

Cast shouts

Scene 2

Teddy and the audience shouts

Teddy sings

Nelly sings the cast joins her

Maleficent enters the stage, organ music plays, thunder sounds and lighting changes

Eastenders theme tune plays

Scene 3

Lighting change

The Princess and Prince sing

Maleficent enters the stage, organ music plays, thunder sounds and lighting changes

Cast singing

Maleficent leaves the stage, organ music plays, thunder sounds and lighting changes

Scene 4

Trumpet sounds

Teddy has a loud tantrum

Scene 5

Squelching noises

Drum rolls when flour gets spilled on Nelly

Scene 6

Loud scary music

Screaming and dark lighting

Maleficent enters the stage, organ music plays, thunder sounds and lighting changes

Maleficent sings

Changes in lighting

Electric guitar music

Scene 7

Fairy Lights sings

The cast sing all together

Interval

Scene 8

Fairy Lights and Teddy sing

Fairy Lights and Prince sing

Scene 9

Sparkly sound effects

Teddy and the cast sing

Audience participation singing.

Scene 10

Maleficent enters the stage, organ music plays, thunder sounds and lighting changes

Scene 11

Prince and Princess sing

Fairy Lights, Teddy and Nelly sing

Trumpet music

Screaming from Fairy Lights, Teddy and the cactus

Scene 12

Maleficent sings

Red lights

Smoke

Fire

Loud instrumental music

The cast sing

Final Scene

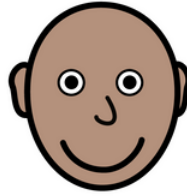
The cast sing a melody of songs

Colourful lighting

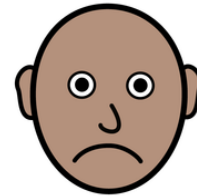
Key Words and Symbols



Overcoming
Challenges



Forgiveness



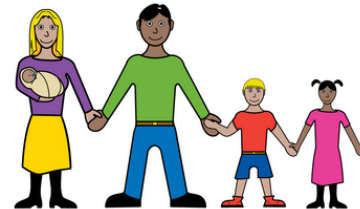
Revenge



Travel

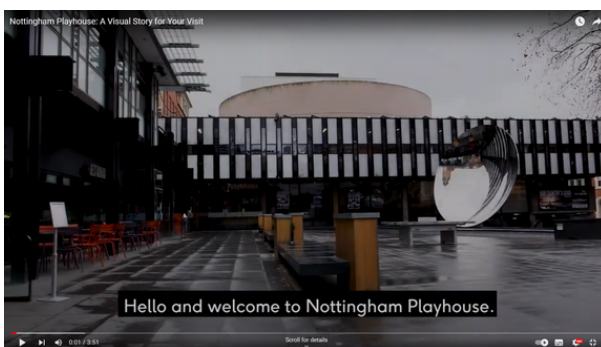


Sleep



Family

A Video Visual Story for Your Visit



A video visual story is available on our website.

Here you can see the auditorium, foyer spaces and Box Office area. Visit the Relaxed Performances webpage to see it.

<https://nottinghamplayhouse.co.uk/your-visit/access/relaxed-performances/>