

NOTTINGHAM PLAYHOUSE
PRESENTS

SLEEPING & BEAUTY

Sponsored by
Nottingham City
Transport



NOTTINGHAM
PLAYHOUSE



Theatre
of the Year
2025



Supported using public funding by
ARTS COUNCIL
ENGLAND

BE PART OF THE FAMILY WITH A PLAYHOUSE PASS

PLAYHOUSE
PASS

Playhouse Pass

£40 for 12 months

Enjoy all year round access to

**Subject to availability **Minimum £10 order applies*

- 7 day priority booking for Nottingham Playhouse productions
- 25% off during your priority booking period
- 25% off Previews and Press Night performances
- Discounts on select Participation events, Studio shows and visiting work
- 10% discount at the Nottingham Playhouse bar**
- Pay no booking fees on events sold through our website or Box Office

Playhouse Pass Premium

£120 for 12 months

Playhouse Pass Premium members enjoy all of the above plus these additional benefits:

- Gold membership card **Subject to availability **Minimum £10 order applies*
- Free programmes for Playhouse productions (when printed)*
- 20% discount at the Nottingham Playhouse bar**
- Free ticket exchanges and resales
- Free postage on tickets
- Exclusive access to members special events
- £60 off seat dedications

Playhouse Patron

From £500

Join us as a Patron Silver, Gold or Platinum member to access our most exclusive events and benefits. For further information about becoming a Patron, please contact us using the details below.

**Join now at nottinghamplayhouse.co.uk/membership
or call 0115 941 9419**

For other ways to support us visit
nottinghamplayhouse.co.uk/support-us
or contact supportus@nottinghamplayhouse.co.uk

WELCOME TO NOTTINGHAM PLAYHOUSE

We are delighted you can join us for our legendary panto – this year it is bigger and better than ever!

We would like to say a huge thank you to our fabulous sponsors Nottingham City Transport for their continued support. Their generosity enables us to continue making theatre for the people of Nottingham and beyond.

After you've enjoyed the show, why not continue the panto fun at home with **Sleeping Beauty On Demand?** Relive your favourite moments of this year's show multiple times in your pyjamas. See page 6 for your exclusive offer.

We are looking forward to our spring season and we have so many exciting shows for you to enjoy. In February, we welcome back **The Beekeeper of Aleppo** following its world premiere and sell-out tour in 2023. In March, James Graham's award-winning play **Punch** returns after its acclaimed runs on Broadway and in the West End. As well

as these returning dramas, a brand-new production of **Small Island**, based on Andrea Levy's beloved novel, comes to our stage at the end of April. Alongside this, there's heaps of visiting work for you to enjoy including the spectacular **Barnum** starring West End favourite Lee Mead. We also have a jam-packed programme of activities for you to get involved with. From improv to choir to our youth theatres – there is something for everyone.

We hope you enjoy today's show and don't forget, from Friday 5 December you can book your tickets for next year's adventure-filled panto, **Aladdin**. Or become a Playhouse Pass member today to get the best seats at the best price with priority booking from Friday 28 November.

Now, on with the show!



Stephanie Sirr

Stephanie Sirr MBE
Chief Executive



Adam Penford

Adam Penford
Artistic Director



Lee Henderson

Lee Henderson
Chief Operating Officer

IN REHEARSAL



The Cast of Sleeping Beauty



TJ Lloyd and Yazmin King



The Cast of Sleeping Beauty



Charis Alexandra



Danny Hendrix



John Elkington



Lara Sas and Seb Harwood

Photography by Manuel Harlan

Bring the Magic of Sleeping Beauty Home!

Available to rent from
Tuesday 16 December.

If you've loved today's performance, you can relive the enchantment from your sofa with our **Panto On Demand!**

Enjoy the laughter, the spells and the sparkle all over again and use the code **MAGICHOME** for 50% off.

Scan the QR code or visit
nottinghamplayhouse.co.uk/events/on-demand-panto

(Terms and conditions: Does not apply to on demand tickets already purchased, valid on full price tickets only, subject to availability. Once you have rented the show, you will have access to it for five days. If you're renting the show after Tue 13 Jan, please be aware that you will have less time to watch it before it is removed on Sat 17 Jan at midnight.)



Make the most of your visit with one of our Lounge Experiences

Choose one of our sparkling packages and you can enjoy pre-show and interval access to our VIP lounge.

Each VIP experience is unique to the show so scan the QR code below to take a look at your options on our website or head to nottinghamplayhouse.co.uk/your-visit/vip-lounge-experiences/

Packages are now available for our 2026 pantomime – Aladdin and a selection of other shows throughout the year.



GET INVOLVED



Nottingham Playhouse is for everyone and our Playhouse Participation team run over 60 programmes for all ages and all abilities. Here are some of the things you can get involved in.

Young People

- Six Young Companies for ages 6 – 18
- Open Stage Young Company for learning disabled and/or autistic young people aged 10 – 18
- Homegrown pre-professional training for young creatives and performers aged 18 – 25
- National Theatre Connections
- FREE Shine Youth Theatre groups in 14 Nottingham(+shire) locations

Adult Courses

- Weekly and one-off classes, for all ages, in drama, dance, play reading, writing, drawing, Shakespeare, improvisation and many more.

Families

- Weekly sessions for under 5s
- Touring shows in libraries and community centres
- Little People Big Adventures story workshops in city libraries
- Family Festivals with games, activities, discos and crafting
- Play In A Day Workshops
- PMLD Workshops

Schools

- Bespoke workshops and CPD
- Insight digital resources
- Ticket deals
- Touring shows
- Schools Shakespeare Festival on the auditorium stage

Community

Specialist programmes engaging particular community groups including:

- Rootz theatre sessions for young people with experience of the care system
- Conversation & Creative Cafe for refugees and people seeking asylum
- Trans Drama Ensemble, Queer Arts Collective & more for the LGBTQ+ community

Find out more and book now by calling **0115 941 9419** or online at **nottinghamplayhouse.co.uk**

Bursaries and access

We work hard to make every programme as accessible as possible.

JOIN THE DOTS TO DISCOVER THIS MYTHICAL CREATURE!



WORDSEARCH

C X V K M H A I B Q D D X J K
M I S R F A T O B Q O C W R T
L D P W M E L H W E U E B P L
Q M I T C Q N E K R V L A J D
V X N W U T V A F R Z I D R S
H R N D R M N P N I X W X E P
T O I D S M O C R N C J W N E
G S N G E D W R B I Y E Q O L
W E G Z J R R R U T N W N P L
H J W R V U T A N I J C L T R
T N H H J R P E G R N H E M P
H T E Y F O C R K O G E E A K
O N E F T E D D Y I N I C G O
R B L X I I C C D C N G I I Z
N J X M F A I R Y K I G P C V

SPINNING WHEEL

MALEFICENT

PRINCE

SPELL

DRAGON

TEDDY

FAIRY

KING

NANNY

CURSE

MAGIC

THORN

ROSE

IN REHEARSAL



John Morton



Seb Harwood



Lara Sas



TJ Lloyd



Photography by Manuel Harlan

The Cast of Sleeping Beauty

**FRI 28 NOV 2025 –
SAT 17 JAN 2026**



SLEEPING & BEAUTY

CAST

John Elkington
Nelly the Nanny

Charis Alexandra
Fairy Lights

Seb Harwood
The Prince

Danny Hendrix
Teddy the Bear

Yazmin King
Princess Rose

TJ Lloyd
The King

Lara Sas
Maleficent

BAND

John Morton
MD & Keyboards

Neil Jackman
Bass

Ben Martin
Guitars & Woodwind

John Watterson
Drums & Percussion

YOUNG CHORUS

Team Torvill
Alexander Bunka
Brielle Houghton
Mairwen Knight
Oliviay Laing
Amiya Maxwell
Ayanna Mzungu
Darragh Sweeney

Team Dean
Sabrina Dzonyk
Harper Etienne
Alaya Hammerton
Harry Keiller
William Kent
Jada Pierce
Anà-Lucia Ward-Gonzalez

Nottingham City
Transport

CREATIVE AND PRODUCTION TEAM

Adam Penford

Director

Cleo Pettitt

Designer

John Morton

Musical Director

Rosanna Bates

Choreographer

Tim Mitchell

Lighting Designer

Paul Groothuis

Sound Designer

Charlotte Jones

Deputy Stage Manager

Maddy Wade

Assistant Stage Manager

Emily Howlett

BSL Consultant

Stacey Green

BSL Interpreter

Austin Ross & Bethany Wright

Follow Spot Operators

Jo Birkett, James Goss, Annalise Walker,**Jude Ward, Kat Winter**

Freelance Costume Makers

Helena Houghton & Kieran Leonard

Freelance Fairy Lights Wing Makers

Izzy Lister, Lisa Pickford, Sarah Richard,**Fran Russell, Celeste Townsend**

Freelance Scenic Artists

Sarah Brown

Lighting Programmer

Henry Anderson, Joe Kelly & Jason Lam

NTU Placement Students

Sets, Scenic Art, Costume, Props, Lighting, Sound, Video, Stage Management and Technical are made or managed by the Nottingham Playhouse team, supported by freelancers. Please refer to the staff list.

Suppliers

Chauvet Professional, MI Workshops, Encore.

Thanks to

Tunnocks, Treat Kitchen, Nottingham City Transport, Orchard Toys, Sweet Cherry Publishing and Joe at Chauvet.

CAST

John Elkington

Nelly the Nanny



John is delighted to be back at Nottingham Playhouse for Panto Season!

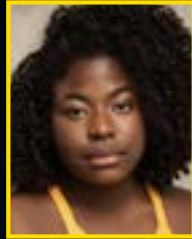
John has worked extensively in theatre, credits including: *Of Mice and Men* (Derby Theatre, Octagon Theatre Bolton, Hull Truck and Theatre by

the Lake) *Holes* (Fiery Angel/Children's Theatre Partnership), *One Man, Two Guvnors* (Ipswich/Southampton), *Queens of the Coal Age* (Manchester Royal Exchange / New Vic), *Holes* (Nottingham Playhouse), *Robin Hood: Arrow of Destiny* (York Theatre Royal), *The Father*, *Meat Pie*, *Sausage Roll*, *Brassed Off*, *Starcross'd*, *The Road To Nab End*, *Me Mam Sez and An Evening With Gary Lineker* (Oldham Coliseum), *Noises Off* (Nottingham Playhouse/No. 1 Tour), *Dancing Through The Shadows* (Hull Truck), *Beryl and Twelfth Night* (West Yorkshire Playhouse), *Robin Hood - Arrow of Destiny* (York Theatre Royal), *The Seagull* (Nuffield/Headlong Theatre), *Carmen*, *The Yalta Game and Elegy for a Lady* (Stephen Joseph Theatre, Scarborough), *Dolly and A Right Old Song and Dance* (New Perspectives), *Kes*, *The Pros and Cons of a Screw* (Derby Theatre), *The Glee Club* (Manchester Library Theatre), *Great Expectations and Carmen* (New Vic Theatre Stoke), *People At Sea* (Salisbury Playhouse), *King Cotton* (Lowry Theatre and Liverpool Empire), *Return to the Forbidden Planet* (UK Tour), *April In Paris* (Keswick Theatre By The Lake) and *Holes*, *The Cherry Orchard*, *The Importance of Being Earnest*, *Lady Bracknell's Confinement*, *Of Mice & Men*, *Garage Band*, *Forever Young* (Nottingham Playhouse).

John has also worked consistently in television appearing in several BBC, ITV and Channel 4 dramas including: *The Village*, *The Mill*, *The Syndicate*, *Oakfield*, *Our Zoo*, *Sunshine*, *Legless*, *New Street Law*, *Cold Blood*, *Shameless*, *Emmerdale*, *Family Affairs*, *Coronation Street*, *Hollyoaks*, *Quest III*, *73 Million To One*, *The Illustrated Mum*, *The Royal*, *Playing The Field*, *Fat Friends*, *Real Men*, *Cold Feet*, *Heartbeat*, *New Street Law*, *Hollyoaks*, *The Quest*, *Sparkhouse*, *The Cops*, *City Central*.

Charis Alexandra

Fairy Lights



Training: ArtsEd – after which she was nominated for Best Recent Graduate and Best Supporting Actress in a Musical at the Black British Theatre Awards 2023

Theatre credits include: *The Producers* (Menier Chocolate Factory); *Barnum* (The Watermill Theatre); 'Alline Bullock' in *Tina: The Tina Turner Musical*

(Aldwych Theatre); *The Enormous Crocodile* (Regent's Park Open Air Theatre/Leeds Playhouse).

Seb Harwood

The Prince



Credits include: Peter in *Jesus Christ Superstar* (Watermill Theatre), Jason Lancaster in *Becoming Nancy* (Birmingham Rep), Kurt Kelly in *Heathers: The Musical* (The Other Palace), Cover Eugene in *Eugenius* (The Turbine Theatre), Jason Lancaster in *Becoming Nancy* (Workshop), Beast in *Beauty and the Beast Panto* (The Core

Theatre Solihull), *Treason The Musical* (Theatre Royal Drury Lane), *Stephen Sondheim's Old Friend* (Sondheim Theatre/BBC), *Maria Friedman & Friends: Legacy* (Menier Chocolate Factory), Fabrizio Naccarelli in *Light in the Piazza* (Royal Academy of Music).

Danny Hendrix

Teddy the Bear



Danny graduated in 2014 with a 1st class BA (Hons) degree in Theatre Arts at The University of Derby and is excited to be back in the Playhouse panto.

Theatre credits include: *War Horse* (National Theatre – UK Tour); *101 Dalmatians The Musical* (Runaway

Entertainment – UK/Ireland Tour); *Cinderella* (Nottingham Playhouse); *The Koala Who Could* (Nicoll Entertainment – UK Tour); *Dick Whittington* (Nottingham Playhouse); *War Horse* (National Theatre – UK/International Tour); *Gangsta Granny* (Birmingham Stage Company – West End/UK Tour); *Zog* (Freckle Productions – UK Tour); *The Snow Dragon* (Tall Stories – UK Tour/Sydney Opera House); *Zog and the Flying Doctors* (Freckle Productions – UK Tour); *Whatshername* (Orange Tree); *The Gingerbread Man* (Derby Theatre); *A Midsummer Night's Dream* (Storyhouse); *Aladdin* (Venue Cymru); *Extra Time* (Derby Theatre); *Jack and the Beanstalk* (Nottingham Playhouse).

Yazmin King

Princess Rose



Yazmin trained at Mountview Academy of Theatre Arts, graduating in 2022.

Theatre credits include: Ensemble, Cover Eponine & Fight Captain *Les Misérables* (2022-2024) Sondheim Theatre, Choir Sondheim Old Friends Concert Sondheim Theatre, Featured Soloist Magic at the Musicals 2021.

Yazmin is delighted to be making her pantomime debut at Nottingham Playhouse and would like to thank her agent and family for their ongoing love and support.

TJ Lloyd

The King



Training: The BRIT School

Theatre credits include: Bert Barry in *42nd Street* (Kilworth House), Rusty Charlie/Cover Nicely Nicely Johnson in *Guys and Dolls* (Bridge Theatre, London), Justin in *Kathy and Stella Solve a Murder* (Bristol Old Vic/Manchester

HOME), Alderman Fitzwarren in *Dick Whittington* (Nottingham Playhouse), Sultan Pepper in *Aladdin* (Loughborough Town Hall), Nicely Nicely Johnson in *Guys and Dolls* (Sheffield Crucible), PC Pong in *Aladdin* (New Brighton), William Barfee in *Spelling Bee* (Drayton Arms), Chief O'Reilly in *Bananaman The Musical* (Southwark Playhouse), Charley Kringas in *Merrily We Roll Along* (Edinburgh Festival 2017).

Lara Sas

Maleficent



Training: The MTA

Theatre credits include: Assistant Choreographer *Dear Evan Hansen* (Asia Tour), Ensemble / Dance Captain / Cover Heidi / Zoe / Cynthia *Dear Evan Hansen* (UK/Ireland Tour), Queen Vanity *Snow White* (Immersion Theatre), Fairy Sprout *Jack and the Beanstalk* (The

Kenton Theatre), Squire Trelawney *Treasure Island*, Monica *Friends the Musical Parody* (UK/Ireland Tour), Evil Villain / Principle Boy *A Wild Christmas*, Kate / Roberta / Theresa *Working A Musical* (Upstairs at the Gatehouse), Lady Lamb *A Year Without a Summer*, Anne Of Beaujeu *A Mother's War* (Drayton Arms Theatre), Cinderella *Cinderella*, Belle *A Christmas Carol* (Groundlings Theatre), *Two and a Half Showbiz Girls* (Musical Cabaret), *Rizzo Grease* (Italian Tour).

Screen credits: Currently in Post Production as Helen in *Ever After - The Bloodiest Nightmare* (Feature Film). Chloe *Impulsive Redemption*, *Auld Lang Syne* (Short), CAVN *Timed Out* Music Video, Django *Django In Time* Music Video, McDonald's Commercial *Return of the Mac*, Adobe Commercial *Pride*, CBBC *Something Special*, Milkshake TV.

Other credits: Assistant Director *The Nightmare Project* (Screambay), Voice Artist (FEAR Screampark), *Covid The Cabaret*, *Walking Dead / Trailers / Containment / Living Nightmare Do Or Die* (Scare Attractions).

"Born and raised in Nottingham, I grew up watching the Nottingham Playhouse panto every year, had the best time dancing in it as a teenager, and now stepping back onto this stage as a principal feels like the most magical full-circle moment – a dream come true.

Wishing a Merry Christmas and huge thank you to my amazing family and fiancé for always supporting me!"

BAND

Neil Jackman

Bass

Neil has been a professional musician since 1997 when at the age of eighteen he moved from his hometown of Great Yarmouth to the Isle of Wight for a summer season. Since then, he has worked for a number of hotels and cruise lines including P&O Cruises and Princess Cruises for whom he was a Musical Director. Neil was also Musical Director and Arranger for Potters Leisure Resort in Norfolk and was most recently band leader at Thoresby Hall Hotel in North Nottinghamshire.

Neil currently works as a freelance bassist and is thrilled to be returning to the team at Nottingham Playhouse for this year's pantomime.

Ben Martin

Guitars & Woodwind

Ben has been described as "A seriously good saxophonist" and "A soloist of immaculate taste and lyricism" by The Guardian newspaper's jazz critics Richard Williams and John Fordham.

A local Nottingham lad, born in Lenton, he has been a professional musician since the early 1990s and has performed all over the world with Sir Paul McCartney, The Drifters, The Commitments, Jimmy James & The Vagabonds, The Foundations, Groove Armada as well as *The Blues Brothers* show, *Our House* and many more. He also leads his own jazz quartet who play regularly around the UK jazz scene.

Ben won a scholarship to the esteemed Berklee College of Music in Boston USA and studied with ex Miles Davis saxophonist David Liebman as well as Sheryl Bailey, Jan Kopinski and George Carmichael. He is now the University of Nottingham's jazz saxophone teacher.

Growing up in Nottingham, Ben has been in the audience of the Playhouse panto many times and always wanted to be one of the musicians. In 2021 he was asked to deputise for a week when one of the musicians contracted Covid. He thoroughly enjoyed "workin' dahn pit" and was thrilled to be asked back for the full run of the 2024 pantomime. A childhood dream come true and beyond as he takes the chair for the 2025 run.

John Watterson

Drums and Percussion

John was born, bred and buttered in Sheffield, South Yorkshire. He has been playing drums and percussion since the age of 13. After playing for local theatre productions and various semi-professional orchestras across the North, John joined Grimethorpe Colliery Band in 2005 and was their Principal Percussionist between 2009 and 2018, undertaking tours to Australia, the USA and Europe as well as playing at the BBC Proms and the 2012 Olympic Opening Ceremony. As a freelance timpanist/drumset specialist, John has performed with the Orchestra of Opera North, Symphonic Brass of London, National Festival Orchestra and English ProMusica and Superbrass, and is currently the principal timpanist of the Brigantes Orchestra in Sheffield. This is John's 15th panto at the Playhouse and he's proud to work with, and for, the best Director, Musical Director, crew, and cast in the land.

**Big thanks for Nelly the Nanny's
fruit, sourced locally from
No.4 The Food Store**



Order online
thefruitbasketdirect.uk

Visit in store
4 Gordon Road, West Bridgford, NG2 5LN

Follow online
@no4foodstore
@The Fruit Basket (The Food Store)

YOUNG CHORUS

TEAM TORVILL



TEAM DEAN



CREATIVES

Adam Penford

Director

Adam is the Artistic Director at Nottingham Playhouse. He trained at the Liverpool Institute for Performing Arts (LIPA).

Broadway credits: *Punch* (Samuel J Friedman); Associate Director on *One Man Two Guvnors* (Music Box).

Nottingham Playhouse credits: *Dear Evan Hansen* (UK and Asia Tour); *Punch* (Apollo/Young Vic); *The Clothes They Stood Up In*; *A Christmas Carol: A Ghost Story* (Alexandra Palace/Worldwide Cinema Release/Birmingham Rep); *The Madness of George III* (NT Live); *Piaf*; *Bubble*; *Holes* (UK Tour); *An Enemy of the People*; *Coram Boy*; *Jack & the Beanstalk*; *Cinderella*; *Dick Whittington*; *Wonderland*.

National Theatre credits: *A Small Family Business* (Olivier); *Dorfman Opening Gala* (Dorfman); *Island* (Cottesloe); *One Man Two Guvnors* (Adelphi/UK & International Tour; Associate Director); *NT 50 Years on Stage* (Olivier/BBC 2; Associate Director).

Theatre credits: *The Sound of Music* (Chichester Festival); *Committee* (Donmar Warehouse); *The Boys in The Band* (Vaudeville/Park); *Platinum* (Hampstead); *Unfaithful* (Found 111); *Watership Down* (The Watermill); *Deathtrap* (Salisbury Playhouse/UK Tour); *Ghost the Musical* (English Theatre Frankfurt); *Stepping Out* (Salisbury Playhouse).

Cleo Pettitt

Designer

Training: B.A. (Hons) Theatre Design & M.A. Scenography, U.C.E. Birmingham; Linbury Prize for Stage Design finalist, 1997; nominated for Best Set Design 2017, 2019 & 2022, Best Costume Design 2024 (Great British Panto Awards); Winner in 2022.

Cleo is delighted to be designing the legendary Nottingham Playhouse panto for the third year running.

She regularly designs many others, including the Hackney Empire, Watford Palace Theatre, Greenwich Theatre, Belgrade Coventry, New Wolsey Theatre, Ipswich and the Woodville, Gravesend.

Other shows, in the UK and abroad, include – in Bermuda, over twenty musicals: *The Addams Family*; *Mamma Mia!*; *The Producers*; *Jesus Christ Superstar*; *Oliver!*; *The Best Little Whorehouse in Texas*; *Into the Woods*; *Dreamgirls*; *Cabaret*; *Beauty and the Beast*; *The Full Monty*; *Ragtime*; *Fiddler on the Roof*. In Dubai: *Fame*; *Blood Brothers*; *Woman in Black*; *Annie*; *High School Musical* (1 & 2); *Abigail's Party*; *Don't Dress For Dinner*; *Dial M for Murder*; *The Sound of Music* (Time

Out Award: Best Musical), transferred to Bahrain and Qatar.

In Canada: the opening two seasons for Montgomery Theatre, Prince Edward Island, with works from Wilde to Coward and Shaw.

Opera: *The Marriage of Figaro* (Lyric, Hammersmith); *Così fan tutte*, *Tosca* (Christ's Hospital, Horsham); *Simon Boccanegra*, *The Merry Widow* (Bloomsbury Theatre); *Don Giovanni*, *Heaven* (Charing Cross); *The Magic Flute*; *The Sound of Music*; *The Pirates of Penzance*, *Anchorage Opera*, Alaska.

John Morton

Musical Director & Keyboard

John is a graduate of Leeds College of Music.

He has conducted National and International productions of *Annie*, *Copacabana*, *The Best of Broadway*, *Phantom of the Opera*, *Kat and the Kings* and has also been Musical Director on *Underneath the Arches*, *Curse of the Werewolf*, *They're Playing Our Song* and the West End Production of *Rat Pack Confidential*.

In regional theatres, he has been Musical Director of musicals including *West Side Story*, *Singing in the Rain*, *Legally Blonde* and *Thoroughly Modern Millie*. He was the featured pianist on BBC's *The Magic of Musicals*, playing alongside Mica Paris, Jill Halfpenny, Aled Jones & John Barrowman. He has accompanied West End and TV stars such as Norman Wisdom, Marti Pello, Marti Webb, Layton Williams and Matthew Morrisson. His songs and arrangements are heard around the world, including the current Pearl & Dean cinema theme.

He also tours as a pianist with *Mozart by Candlelight* and with Richard Shelton's *Sinatra Raw* show.

For the last two years he has been Musical Director on the international tour of *Chicago*.

"This is the 36th year I have had the pleasure of being Musical Director at the wonderful Nottingham Playhouse pantomime. Feel free to come down to the orchestra pit & say hello!

Merry Christmas and Happy New Year! JM"

Rosanna Bates

Choreographer

Rosanna returns to Nottingham Playhouse having previously choreographed *Jack and the Beanstalk* and *Cinderella* at Nottingham Playhouse.

Training: The Arts Educational School

Theatre credits as Performer include: *Dick Whittington* (Nottingham Playhouse); *South Pacific* (Chichester Festival Theatre); *A Christmas Carol* (The Old Vic); *Les Misérables – The Staged Concert* (Gielgud Theatre); *Follies* (National Theatre); *The*

Wind in the Willows (London Palladium); *Chitty Chitty Bang Bang* (West Yorkshire Playhouse & National Tour); *Seven Brides for Seven Brothers* (Open Air Theatre); *Mamma Mia!* (Novello Theatre); *Les Misérables* (Queen's Theatre); *Cinderella* (Lighthouse Theatre, Poole).

Other performance credits include: *The Three Phantoms* (Asian Tour); *The Olivier Awards* (Theatre Royal, Drury Lane & Royal Opera House); *Friday Night is Music Night* (BBC Radio 2).

Television includes: *This England* (Fremantle/Revolution Films/Sky); *All Star Musicals* (ITV).

Tim Mitchell

Lighting Designer

Tim is an Associate Artist for Royal Shakespeare Company and Chichester Festival Theatre and a Fellow of the Royal Welsh College of Music & Drama.

In 2015 he won a Knight of Illumination Award for *Taken At Midnight* (Chichester). He was nominated for an Olivier Award for *Henry IV Part 1 and 2* (RSC), a Green Room Award for *Singin' in the Rain* (Australia) and a Critics' Award for Theatre in Scotland for *Alice's Adventures in Wonderland* (Royal Lyceum). He has also been awarded a Naleda Award for *King Kong* (Fugard Theatre) and in 2018 and 2020 he was nominated for Best Lighting Design in the Fleur Du Cap Awards for *King Kong* (Fugard Theatre) and *Kinky Boots* respectively.

Recent credits include: *The Snowman* (Peacock Theatre); *Top Hat* (Chichester Festival Theatre); *Taj Mahal* (Grange Park Opera); *Mazeppa* (Grange Park Opera); *Simon Boccanegra* (Grange Park Opera); *Madama Butterfly* (Grange Park Opera); *The Plays the Thing, a One Man Hamlet* (Wilton's Music Hall); *Le Nozze Di Figaro* (Royal College of Music); *Calamity Jane* (UK Tour); *If/Then* (Savoy Theatre); *The Snowman* (Sadler's Wells & Birmingham Rep); *Dick Whittington and his Cat* (Hackney Empire); *Jeeves Takes Charge* (Ustinov Studio, Theatre Royal Bath); *Sister Act* (West End, UK Tour & International Tour); *Singin' in the Rain* (International Tour); *Charlie and The Chocolate Factory* (Leeds Playhouse & UK Tour); *A Christmas Carol* (RSC); *Idiots Assemble: Spitting Image Live, Upstart Crow* (West End); *Jeeves Takes Charge* (Bath Theatre Royal); *Wicked* (Folketeateret, Oslo); *Hello Dolly* (Lido Paris); *Wicked* (Frederica Teater, Denmark); *Rent* (Theater St Gallen, Switzerland); *Cinderella, Jack and the Beanstalk* (Nottingham Playhouse); *HMS Pinafore, The Force of Destiny, Fidelio, Iolanthe* (ENO); *Island of Dreams, Katya Kabanov, Fille Du Regiment, Gianni Schicchi/Alecko, Tosca, Tristan Und Isolde, Werther, La Gioconda, Otello, The Excursions of Mr Broucek* (Grange Park Opera); *L'Orfeo, Fairy Queen* (Longborough Festival Opera); *Sinatra The Musical, The Play What I Wrote, The Exorcist* (Birmingham Rep); *She Loves You* (& Aarhus), *Atlantis* (Tivoli); *A*

Streetcar Named Desire (Orlando/ Nashville Ballet); *Kinky Boots, West Side Story* (Fugard Cape Town); *Funny Girl, Guys and Dolls* (Théâtre Marigny, Paris); *Margrethe Pressure* (Royal Alexandra, Toronto).

Paul Groothuis

Sound Designer

Born in the Netherlands, Paul came to the UK in 1979 to study Stage Management at Central School of Speech and Drama. From 1981-1984, he was Resident Engineer at Jeff Wayne Music Studios. He joined the National Theatre and stayed until 2001, designing the Sound for over 120 productions. Since going freelance, Paul has designed the Sound for over 400 productions all over the world.

Previous work at the National includes: *The Cherry Orchard; The House of Bernarda Alba; Stuff Happens; A Funny Thing Happened on the Way to the Forum; Anything Goes; His Dark Materials; All My Sons; Edmond; Henry V; A Streetcar Named Desire; The Coast of Utopia; My Fair Lady; Hamlet* (1987/2010/2011); *Oklahoma!* and *Follies*.

At Hampstead Theatre: *I and You; Cost of Living; Slaves of Solitude; Filthy Business; Rabbit Hole; Good People; 55 Days; The Judas Kiss and Chariots of Fire* (both West End) and *Loyalty*.

At Chichester Festival Theatre: *Travels with my Aunt; Mack and Mable; Gypsy; Guys and Dolls; Young Chekhov; Rosencrantz and Guildenstern are Dead; The Tempest; Ros; Sweeney Todd; South Pacific; Oklahoma!; The Sound of Music and Top Hat*.

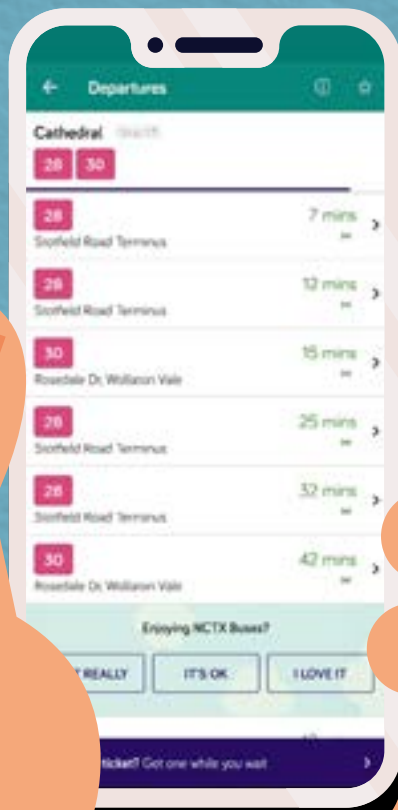
Also: *The King and I* (Palladium/tour); Matthew Bourne's *Nutcracker!; Dorian Gray; Carman; Edward Scissorhands; Highland Fling; Cinderella; Sleeping Beauty; The Red Shoes; Romeo and Juliet* and *Midnight Bell* (Sadler's Wells/world tour); *Carousel* (National Theatre/West End/Tokyo); *Oliver!* (Palladium/Drury Lane/tour); *Mary Poppins* (UK & US tours/Holland, Germany); *Marguerite* (West End/Tokyo); *Acorn Antiques* (West End); *Everybody's Talking About Jamie* (Sheffield Crucible/West End); *Sinatra The Musical* (Birmingham Rep); *Hello Dolly!* (Palladium) and *The Producers* (Garrick).

Paul was nominated for two Olivier Awards and received a Live! Award for his work on *Oklahoma!* at the National.

Paul is a Creative Associate with Matthew Bourne's New Adventures Company.

SAVE ON TRAVEL WITH THE NCTX BUSES APP

SAVE!



**15% OFF
GROUPRIDER
TICKETS**

with
**NOTTINGHAM
PLAYHOUSE**

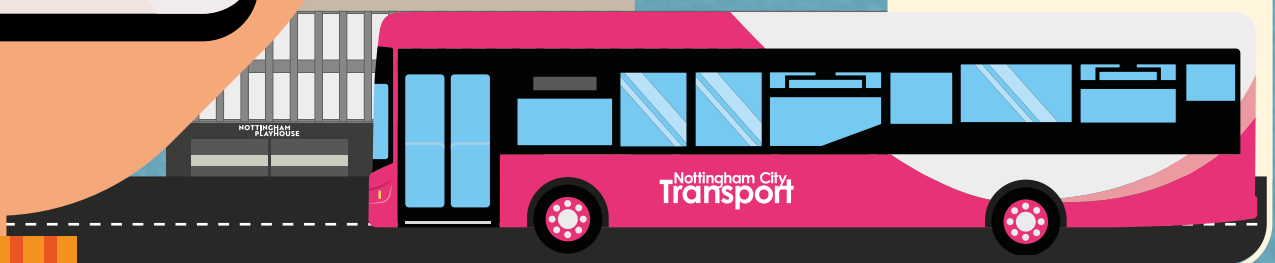
RECEIVE A DISCOUNT
CODE WHEN BOOKING
PLAYHOUSE TICKETS

**SCAN
HERE**



or visit

NCTX.CO.UK/APP



BOARD AND FUNDERS

The Board Of Trustees

Janette Alvarado-Cruz
David Barter
Alex Bayley (Co-Vice Chair)
Shobna Bazzaz
Claire Book
Amanda Farr (Chair)
Roger Harcourt
Cllr Pavlos Kotsonis
Danielle Russell
Cathryn Smith
Becky Valentine (Co-Vice Chair)
Bethan Wakefield
(Youth Board Representative)
Amanda Whittington

Youth Board

Careese Hutchinson
Ryan McDade
Rosario Rodriguez-Fernandez
(Chair)
Joss Birkett
Noah Baguley
Christopher Molife
Grace Cook
Harry Barnett
Bethan Wakefield
Rosie Quick
Fred Baker
Connie Harrison
Megan Alder
Jennifer Finlay
Zarmeeneh Khan

Members

Anthony Almeida
Cat Arnold
Steve Battlemuch
Andy Batty
David Belbin
Tim Challans
Rebecca Cranham
Stephanie Drakes
Rastarella Falade
Mark Fletcher
Jackie Gardner
Harvey Goodman
David Greenwood
Katherine Harlow
Emma Hayes
Adam Iqbal
Ian Lund
Margot Madin
Sheila Marriott
Ryan McDade
Caroline McKinlay
Thulani Molife
David Orange
Rosario Rodriguez-Fernandez
Simrun Sandhu
Cathryn Smith
Rachel Smith
Paul Southby
David Stead
David Stewart
Michelle-Kim Vacciana
Tomas Wright

Playhouse Patrons

Carolyn & Simon Gilby
Baroness (Ruth) Lister of
Burtersett
Michael Stokes, KC, DL
Jeff & Deb Tullin
Chris Battiscombe-Scott
Andrew & Linda Fearn
Paul & Vicki Hart
Tom Huggon
Anna Joyce
Alison Minney
Louise Third MBE

Thanks To

Sir Harry Djanogly
Nottinghamshire
County Council
The Garfield Weston Foundation
Boots Charitable Trust
David Stewart OBE
National Lottery Community Fund
The Lace Market Theatre
The Osberton Trust
The Lady Hind Trust
The Thomas Farr Charity
The Jones Trust
The Clothworkers' Foundation
Backstage Trust
The Mary Robertson Trust
The Fenton Arts Trust
Noel Coward Foundation
The Garrick Charitable Trust
De Brito Trust
The Jessie Spencer Trust

Our Work With Local Businesses

Nottingham Playhouse is very proud to work with a range of philanthropic local businesses, whose support for the theatre is incredibly important.

We would like to extend our sincerest thanks to:



Nottingham Playhouse Trading Board

David Barter
Jonathan Hamblett
Roger Harcourt (Chair)
Angela Robinson
Richard Scragg
Joanna Sigsworth

To find out more, please contact our team on **0115 873 6242** or email **supportus@nottinghamplayhouse.co.uk**

STAFF LIST

Executive

Stephanie Sirr MBE Chief Executive, **Adam Penford** Artistic Director, **Lee Henderson** Chief Operating Officer, **Alice Cammell** Executive Assistant.

Box Office

Emma Barber Box Office and Welcome Assistant, **Alistair Eades** Box Office Duty Supervisor, **Owen Fulton** Box Office and Welcome Assistant, **Fiona McFarlane** Box Office Assistant, **Richard Surgay** Sales and CRM Manager, **Charlotte Thompson** Audience Data and Insights Officer, **Jeremy Walker** Box Office Supervisor.

Cleaning

Loretta Fearon Cleaner, **Cindy Hutchinson** Cleaning Supervisor, **Gloria Hyatt** Cleaner, **Michal Janik** Cleaner, **Suzanne Singleton** Cleaner.

Finance

Lorna Burke Finance and Payroll Officer, **Jonathan Child** Finance Manager, **Abbie Lloyd** Finance Officer.

Fundraising and Development

James Cottis Fundraising & Development Officer, **Jess Straub** Development & Sponsorship Manager.

Marketing and Communications

Niamh Atkinson Marketing Assistant, **Alice Dale** Senior Marketing Officer, **Kathryn McAuley** Media and Communications Manager, **Bethany Darbyshire** Digital Content Creator, **Joanna Sigsworth** Director of Marketing and Communications, **Vanessa Walters** Head of Marketing, **David Burns** PR.

Customer Experience and Operations

James van Aardt Food & Beverage Assistant, **Rae Akinbo** Audience Assistant, **Christine Baxter** Usher, **Lisa Booth-Blake** Usher/Stage Door Keeper, **Violet Bourne** Customer Experience Supervisor, **Elliot Briffa** Food & Beverage Assistant, **Andrew Bullett** ICT Manager, **Pamela Bullett** Usher, **Danny Buttfeld** Audience Assistant, **Louise Carney** Stage Door Keeper, **Bethany Cooper** Customer Experience Supervisor, **Isobel Cooper** Food & Beverage Assistant, **Bethany Cresswell** Customer Experience Supervisor, **Louis Croft** Customer Experience Supervisor, **Olwen Davies** Usher/Stage Door Keeper, **Katy Daniels** Usher, **Grace Deavall** Welcome Team Duty Manager, **Clare Devine** Usher, **Gulara Dilshat** Audience Assistant, **Sav Dixon** Audience Assistant, **Kirsty Edwards** Head of Commercial & Operations, **Nengimote Esendu** Food & Beverage Assistant, **Ethan Goetzee** Customer Experience Manager, **Ned Grabiec** Food and Beverage Assistant, **Jenny Gray** Audience Assistant, **Dawn Hammond** Audience Assistant, **Tish Hickey** Audience Assistant, **Lily Holmes** Assistant Customer Experience Manager, **Joe Hood-Mooring** Food & Beverage Assistant, **Laura Hutchinson** Usher, **Emily Hyslop** Audience Assistant, **Michal Janik** Audience Assistant, **Lydia Jones** Usher, **Mark Lacey** Audience Assistant, **Francesca Lawson** Usher/Stage Door Keeper, **Georgie Leckey** Audience Assistant, **Geoff Linney** Stage Door Keeper, **Eliot Martin** Maintenance Technician, **Millie Mason** Audience Assistant, **James McGarvey** Food & Beverage Assistant, **Annis McGee** Welcome Team Duty Manager, **Charlie Middlemass-Patel** Usher, **Matt Miller** Audience Assistant/Food & Beverage Assistant, **Laxmi Mishra** Food & Beverage Assistant, **Christopher Molife** Food & Beverage Assistant, **Karli-Rose Morris** Food & Beverage Assistant, **Catherine Morrow** Audience Assistant, **Diane Morton** Audience Assistant, **Fallon Murray-Dawes** Food & Beverage Assistant, **Amanda Nash** Audience Assistant, **Jocelyn Newman** Food & Beverage Assistant, **Eden Peppercorn** Operations Officer, **Abigail Pidgeon** Audience Assistant, **CeCe Powell** Duty

Manager, **Dave Richardson** Stage Door Keeper, **Jennifer Seeley** Audience Assistant, **Katya Senior** Audience Assistant, **Rachelle Sinclair** Audience Assistant/Stage Door Keeper, **Harry Smith** Facilities and Operations Manager, **Mesha Smith** Audience Assistant, **June Stewart** Audience Assistant, **Jo Stonley** Audience Assistant, **Caitlin Taff** Audience Assistant, **Maithil Tandel** Food & Beverage Assistant, **Alyssa Tate** Audience Assistant, **Katie Taylor** Audience Assistant/Food & Beverage Assistant/Stage Door Keeper, **Riley Thomas-Abraham** Food & Beverage Assistant, **Andrew Tinley** Usher, **Ksenia Tsymbal** Food & Beverage Assistant, **Lizzie Watt** Food & Beverage Assistant, **Alyssa Watts** Audience Assistant.

Participation

Laura Chambers Participation Programme Manager, **Keilah Chambers-Turner** Participation Coordinator, **Tia Elvidge** Participation Producer, **Layla Hassan** Participation Department Assistant, **Andy Reeves** Director of Participation (Maternity Cover), **Rosario Rodriguez-Fernandez** Participation Department Assistant, **Rob Throup** Participation Producer, **Ksenia Tsymbal** Interim Participation Coordinator, **Sarah West** Senior Participation Producer.

People and Culture

Candice Baker Interim People and Culture Manager.

Producing

Amanda Bruce Director of Producing, **Beccy D'Souza** Artist Development Producer, **Jack Hudson** Producer, **Sarah Kelly** Programme Coordinator.

Technical and Production

Lauren Allsopp Costume Maker, **Tia Beddington** Costume Placement, **Caitlin Boddy** Costume Placement, **Sav Dixon** Stage Crew, **Hannah Dumm** Costume Maker, **Hannah Boothman** Prop Assistant, **Connie Burley** Prop Assistant, **Emilie Carter** Head of Costume, **Alex Clarke** Scenic Workshop Assistant, **Marcus Clarke-Smee** Casual Technician, **Tom Codd** Deputy Head of Sound, **Penny Coke-Woods** Technician (Lighting & Video), **Jace Daws** Apprentice Technician, **Patricia Davenport** Company Stage Manager, **Charlotte Elliot** Costume Maker, **Dylan Evans** Casual Technician, **Erin Fleming** Scenic Artist, **Clara Freestone** Costume Placement, **Janine Forster** Head of Construction, **Leila Glen** Production Coordinator, **Emily Hackett** Deputy Head of Scenic Art, **Katie Hallam** Scenic Art Work Experience, **Bradley Hunt** Casual Technician, **Bethan Keen** Dresser, **Cameron Lloyd** Technician (Sound), **Jessica Lunt** Props Assistant, **Roxy Macovei** Costume Placement, **Daniel McVey** Stage Crew, **Ryan Moore** Deputy Head of Lighting and Video, **Kushal Patel** Deputy Head of Stage, **CeCe Powell** Dresser, **Andrew Quick** Head of Production, **Rosie Quick** Casual Technician and Dresser, **Lewis Reid** Casual Technician, **Billy Logan** Casual Technician, **Jodie Pengally** Costume Maker, **CeCe Powell** Dresser, **Eloisa Roan** Costume Assistant, **Anna Roberts** Scenic Artist, **Jules Sheppard** Costume Maker, **Matt Sims** Head of Sound, **Abigail Skelton** Casual Technician, **Benjamin Small** Casual Technician, **Jamie Smith** Technical and Production Manager, **Molly Stammers** Head of Lighting and Video, **Claire Thompson** Head of Scenic Art, **Tony Topping** Head of Stage, **James van Aardt** Apprentice Technician, **George Wilson** Casual Technician, **Jodie Whitchurch** Prop Assistant, **Laura Wolczyk** Technician (Stage), **Hannah Zemlak** Head of Props.

Chaperones

Esther Coleman, **Alice Houldsworth**, **Martha Kent**, **Lisa Lamb**, **Imogen McAra-James**, **Amanda Nash**, **Julie Slatcher** (Lead Chaperone), **Alison Russell**, **Khia Todd**, **Bethany Wear**, **Bronwen Webster**.



Nottingham Playhouse
is a Theatre of Sanctuary.

TAKE A SEAT

Nottingham Playhouse would like to thank the following individuals and companies for dedicating a seat in our historic Auditorium:

D12 Frances & John Burr
D13 Chris J Dixon
D19 Helen Wilcox
E1 Emma McKinlay
E5 Mr Youssef Kerkour
E6 David Swaby
E7 Nicola Ray
E8 Simon Ray
E9 John Gurnhill
E10-11 Eversheds
E12 Peter and Joanne Wright
E13 John Pike
E14 Hazel Hampton
E15-16 Jean and Des Gamlen
E17 The Westmoreland Family
E18 Heronimo Sehmi
E19 Seanna Arwen-Langham
E20 The "Smiths" and The "Kirks"
E21 Eric Marchant
E22 Mrs Julie O'Boyle
E25 Terry Harris née Beryl Haynes
E26 Eirian Bell
F1 Jacob Holt
F6 Tim 'Firehorse' Challen
F8-9 Keith and Carol Henthorn
F10 Martin Crouch
F11 John Neville
F12 Julia Howell
F13 Mrs Christine Godwin
F14 John Bailey
F15 Mich Stevenson OBE DL
F16 Jan Stevenson
F17 Daniel Hoffmann-Gill
F18 Rev. Brian Welsh
F19 Lucy Bagley
F20 Elsie Jean Hitchin
F21 Dave & Mandy Gilley
F25 Doris and Frank Cantello
F28 Andy & Di McInnes
G1 Eddie & Rory Saunders
G8 Andy Batty
G10 Margaret Glynn
G11 Glynis M Prosser
G12-13 Ann & Michael Rowen
G14 Martin Willis
G15 Zak Horton
G16 Jeanette Spracklen
G17 Frances Scott-Lawrence
G18 Geryon Theodora Bell
G19 Frances Scott-Lawrence
G20 Browne Jacobson LLP
G21 John and Christine Pearcey
G22 Fiona Milnes-James
G23 Richard Milnes-James
H9 Phoebe Frances Brown
H10 Major Labia
H11 Colin Gibson
H12 Jim Taylor
H13 Jim Rowland Broughton
H14 Joan Holden
H15 Petro Zwarycz
H16 Karl Alexander Tumour Appeal
H17 Mrs S Beverton
H18 Nottinghamshire County Council
H19 Colin Tarrant
H20 Robert Love
H21 Geoff Nightingale
H22 Heather Flinders
H23 Richard Bullock
H24 Alison Bullock
I1 Jonathan James Bryant
I8 Sir Ian McKellen
I9 Sarah Richards
I10 Emma Adderton

I11 Steffan Adderton
I12 Christina Juliff-Wells
I13 Val May
I14 Baroness Lister of Burtersett
I15 Pearl and Roy Pearson
I16 Pat Salzedo
I17-18 Mr and Mrs DW Bostock
I19 University of the Third Age
I20 Amanda Twitchett
I21 Ivis & Henry Kennington
I22 Ron Morris
I23 The Hampson Family
J5 Jean Pallant
J8 John Radcliffe and Carol Williams
J9 Joanna Terry
J10 Voytek
J11 Gemma Jones
J12 Alison Garner
J13 Chloe Lasher
J14 Brenda Frost
J15 Harvey Goodman
J16-17 Mr and Mrs Michael Headland
J18 Mrs E Dougherty
J19 Jenny Farr
J20 Mrs Melanie Oldershaw
J21 Grosvenor School
J22 Bob & Marilyn Larson
J23 Helen Flach
J24 John Hilgers
J25 Sally Scott
J26 Collette McCarthy
J27 John Shipman
J28 Farshid Rokey
J30 Julie Haddock
K6 Ira Aldridge
K8 William Cashmore
K9 Cathy Craig
K10 Joyce Little
K11 Bob Little OBE
K12 Ruth McIntosh
K13 Anne Swarbrick
K14 Peggy Lawson
K15 Paul Morris
K16 Ms C Ayre
K17 Mandy Hewitt
K20 Julia Cooper
K21 Mrs F W Mealar
K22 Jane Price
K23 Nottinghamshire County Council
K24 Michael Frank Atherton
K25 Eileen Hepworth Atherton
K29 Betty Dewick
K30 Kenneth Alan Taylor
K31 Andrew Rogers
L4 Tony Wills
L7 Michael Parlatt
L10 Paul Shepherd
L11 Barbara Barton MBE
L12 Ian Chaplin
L13 Sir Richard Eyre
L14 Club Encore
L15-16 The University of Nottingham
L17 Ian Chaplin

L18-L19 Russell Scanlan
L20 Abigail McKern
L21-22 Mr and Mrs R A Newbery
L23 Tina & Sandy Brown
L24 Cherry Knight
L25 The Playhouse Club
L26 The Friends of Nottingham Playhouse
L31 The Trigg Family
M1 Maggie Guillon
M2 Trudy Begg
M3-4 David Hunt
M5 F L Knowles
M6 Penny Evans
M7 The Nottingham Nuffield Hospital
M8 Judith Grant
M9 Josephine Melville
M10 Browne Jacobson
M11-12 Nottingham Evening Post
M13 Mrs M Duddridge
M14 Miss Judith Platt
M15 Mrs M L Atkinson
M16 Mr R V Arnfield
M17 Mrs J Priestley
M18 Miss N Pink
M19-20 Catherine Pitt
M21 Mrs Irene Atkin
M22 Mr Brian Livermore
M23 Cllr C Preston
M24 Mrs E Le Marchant-Brock
M25 Rosie Smith
M26-30 Nottingham Civic Society
M31 Tony, Janice & Ewan Farr
M32 Richard Digby Day
M33-34 Luwayvonna Callender
N1 David Parkes
N2 The Stewart Family
N3 David S Stewart OBE DL
N4 Felicity Woolf
N5 Jeanne Izod
N6 Anita Thouless
N7 Morgan Vick
N8 Judith Grant
N9 Nigel Broderick
N10 Geldards LLP
N11 Barclays Bank Plc
N12-15 Mrs Maggie Allen
N16 Russell Tomlinson
N17 Mr Emrys Bryson
N18 Mr Ernest Kemp
N19 Mr T Huggon
N20 Imperial Tobacco
N21 Rae Baker
N22 Lindsay Granger
N23 Roy Boutcher
N24 Dr P Bartlett
N25 Angela Brown
N26 Mr R Gibbons
N27 Maggie Backhouse
N28 Myra Slack
N29 Maria Di Marino
N30 John and Elisabeth Fletcher
N31 John Crossdale
N33-34 David Hunt
O1 Eric Marchant
O6 Gill Darvill

O7 Andrew Roberts
O8 Jim Frawley
O9 Gerard Blair
O10 Design by Tomkins
O11 Mrs M Adams
O12 Simone Lennox-Gordon
O13 Brooks and Wardman Optometrists
O14 Montague Reynolds
O15 Hart Hambleton Plc
O16 Phillip Watts Design
O17-19 Dr R Pearce
O20 Sid and Carolyn Pritchett
O21 Wendy Johnson
O22-23 Jill Hunt and Sandra Rowe
O24 Robert Hogg
O29 Michael Pinchbeck
O30 Mr A D Pinchbeck
P1 Sir Paul Smith
P4 David Tilly
P5 Jean Pallant
P8 Peter Ryder
P9 Miss R Simpson
P10 Mrs J Priestley
P11 Miss S Simpson
P12 Diana Irving
P13 Mr M Banks
P14 Alan Perrin
P15 The Stoneyholme Trust
P16 Jean Sands
P17 David W Kidd
P18 Phillippe Rogueda
P19 Victoria Harrison
P20 The A W Lymn Foundation
P21 Stanley Middleton
P22 David Edmond
P27 Jackie Lymn Rose
P28 Dee Glynn
Q1 Finley Murray
Q2 Barbara Chapman
Q7 Marjorie Dawson
Q8 Sheila Pike
Q9 Mr and Mrs Burrows
Q10 Susan Sheppard
Q11 Jayne Mee
Q12-13 Mrs S Smart
Q14 A Church
Q15-16 Marielaine Church
Q19 A Midsummer Night's Dream
Q20 Sheila Sisson
Q21 Roy Costa
Q26 Nick Lawford
R1 Nigel Dickinson
R6 Jane Eliot-Webb
R10 Four Cows
R11 Giles Croft
R12 Mark Fletcher
R13 Mr G B Hope
R14-19 Sue and Tony Walker
S10 J C Spencer
Circle
A13 Joan Case
A14 Fred Case
A20 Kynan Eldridge
D1 Rita Rycroft
D2 Cliff Rycroft
G18 Geryon Theodora Bell

Nottingham Playhouse presents

Make the
most of your
visit with an
Exclusive Lounge
Experience

ALADDIN



BOOKING NOW OPEN!

Box Office 0115 941 9419
nottinghamplayhouse.co.uk

**FRI 27 NOV 2026 –
SAT 16 JAN 2027**

**NOTTINGHAM
PLAYHOUSE**



Supported using public funding by
**ARTS COUNCIL
ENGLAND**