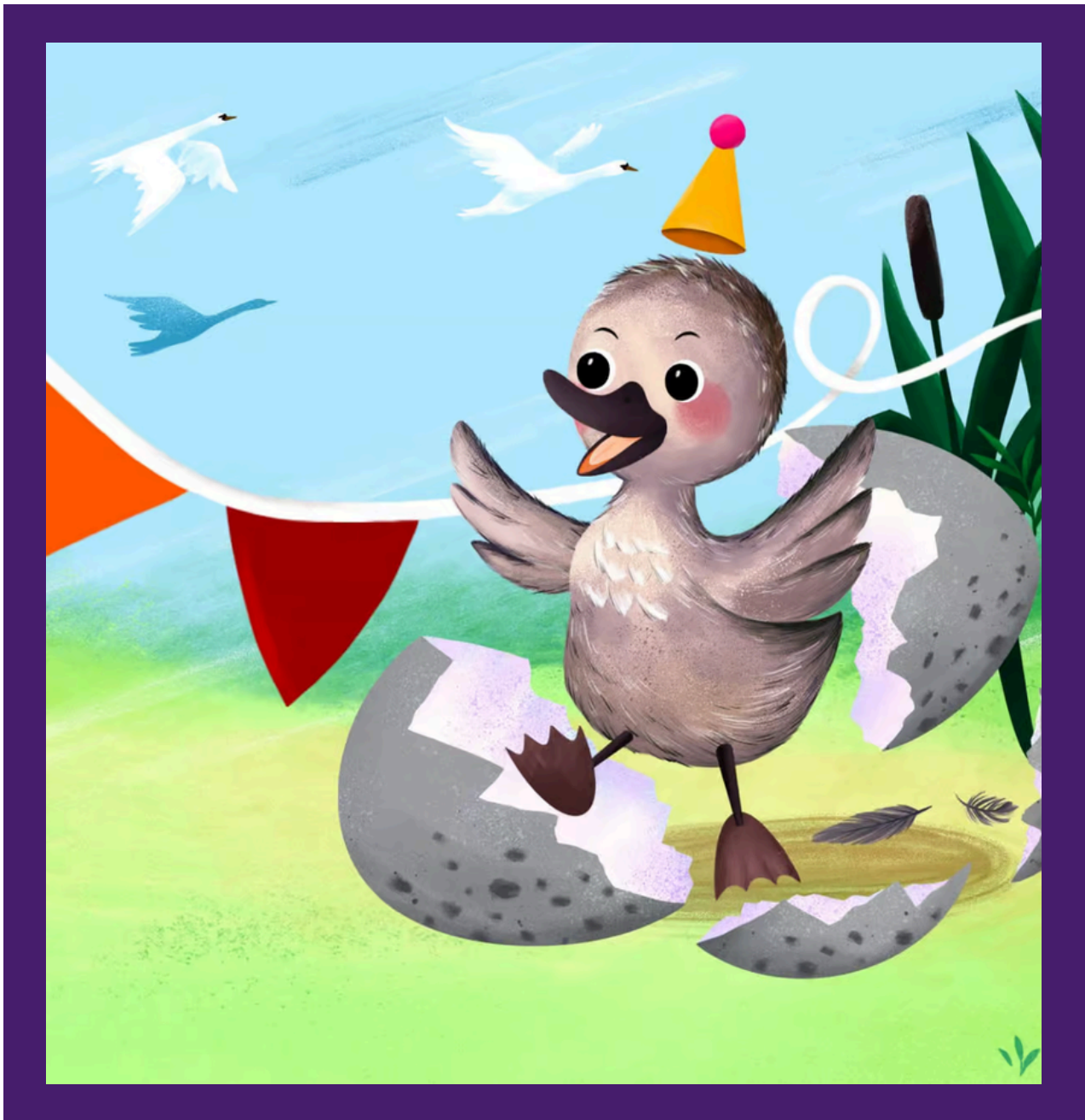


Nottingham Playhouse presents

THE UGLY DUCKLING



Visual Story

NOTTINGHAM
PLAYHOUSE



Supported using public funding by
**ARTS COUNCIL
ENGLAND**

Welcome to The Ugly Duckling at Nottingham Playhouse



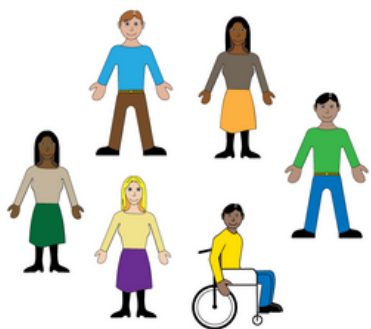
You are visiting a theatre called Nottingham Playhouse.



In the entrance you will see our Box Office.



This is where people buy or collect tickets.



Sometimes there are lots of people here.

The Foyer and chill-out space



People wait to see the show in the foyers.

This is what the foyer looks like.



If you want to sit somewhere quiet before, during or after the show then you can use the chill-out space.

Refreshments



There are bars on the upper and lower foyers. There is also a bar and seating area in the room next to Box Office. You can buy food and drinks here.



This is what the bars look like.

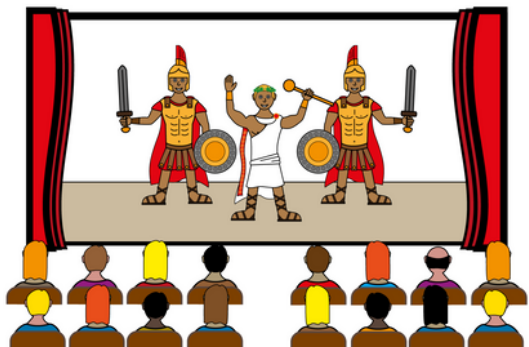
The Neville Studio



The Neville Studio is where you will go to watch The Ugly Duckling. The Welcome Team will help you find your seat.



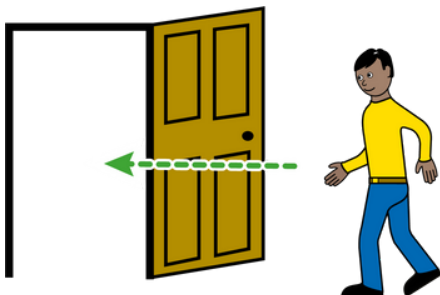
This is what the stage will look like.



When the show starts, the actors will come onto the stage and begin to perform. There might not be any set for this show, as it is in the studio.



It is okay to get up out of your seat if you need to move around. You can leave the room at any time and come back in when you are ready.



After the show has finished you can leave the auditorium when you are ready.

The Actors

Here are the actors in The Ugly Duckling. There are only three actors in the play.

Here they are not dressed in their costumes:



Ethan

This is Ethan. He plays Ugly the Duckling.



Maya

This is Maya. She plays Mama Duck, Gob the Sheep, Magpie, Housecat and Swan.

The Story



Ugly and Gob appear onstage. They teach the audience some animal noises. You may choose to join in. They leave the stage.



Ugly enters. He sings a song about being different. He eats his birthday pie alone because Mama Duck is too busy. He sees a swan fly past and decides to leave home. Mama Duck comes back with a cake but Ugly is gone.



Ugly enters a field. He asks the audience to make animal noises. You may choose to join in. Gob the sheep enters looking for flowers. This surprises Ugly and they both scream.



Gob teaches Ugly and the audience a song and dance. You may choose to join in. She eats all of Ugly's pie, puts the empty foil tray on his head and leaves. Ugly sings and walks through the audience.



Magpie enters and sings a song about shiny things. Ugly pretends he is the Prince of Shinyville. They both sing. Ugly admits he is not actually a prince. Magpie is disappointed and leaves. Ugly sees a house and goes inside.

The Story



Housecat enters and scares Ugly. He sings a song to tell Ugly not to worry. He puts Ugly in a frying pan and ties him up. Ugly asks the audience to hiss to scare Housecat. You may choose to join in. Housecat runs away.



Ugly is miserable. Gob enters. She hugs him and says he looks like a swan. Ugly looks at his reflection in the stream and is happy. They both sing a song about looking for the other swans.



They arrive at Swan Lake. Ugly asks the audience to honk. You may choose to join in. Swan enters. Ugly sings a song about not fitting in with the cool swans. He tells Gob he misses home.



Ugly goes home. He asks the audience to cheer. You may choose to join in. Mama Duck is happy to see him. She gives him pies and says she will always love him. She sings him a song about freedom. They both leave.



Gob enters. She makes animal noises with the audience. You may choose to join in. Ugly enters and surprises her. They give each other gifts. Ugly and Gob do a song and dance to end the show. You may choose to join in.

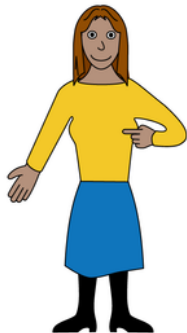
Key Words and Symbols



Friendship



Loneliness

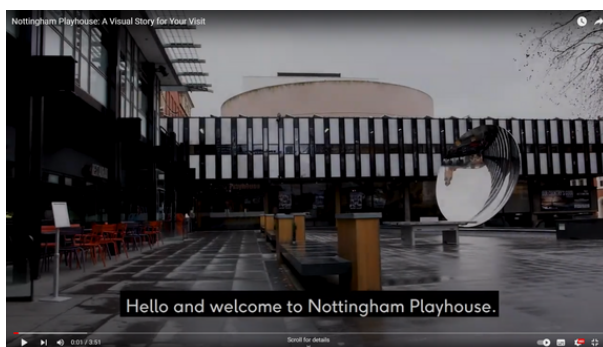


Identity



Adventure

A Video Visual Story for Your Visit



A video visual story is available on our website.

Here you can see the auditorium, foyer spaces and Box Office area. Visit the Relaxed Performances webpage to see it.

<https://nottinghamplayhouse.co.uk/your-visit/access/relaxed-performances/>

Thanks to  easy on the  for the use of their image bank © LYPFT
www.easyonthei.nhs.uk