

Nottingham Playhouse presents

# Jack and the Beanstalk



## Visual Story

NOTTINGHAM  
PLAYHOUSE

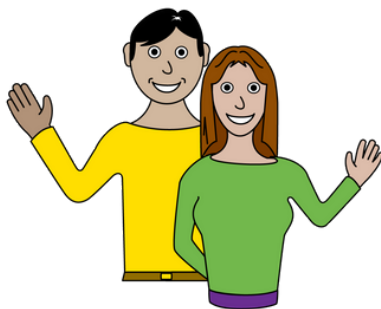


Supported using public funding by  
**ARTS COUNCIL  
ENGLAND**

# Welcome to Jack and the Beanstalk at Nottingham Playhouse



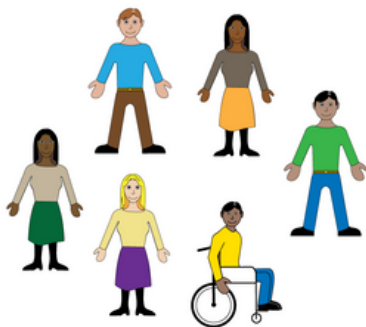
You are visiting a theatre called Nottingham Playhouse.



In the entrance you will see our Box Office.



This is where people buy or collect tickets.



Sometimes there are lots of people here.



# The Foyer and chill-out space



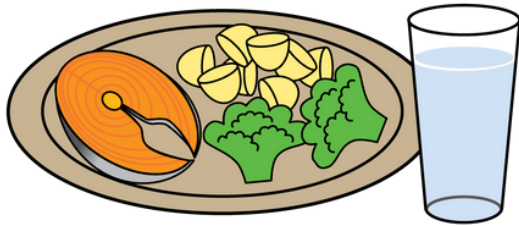
People wait to see the show in the foyers.

This is what the foyer looks like.



If you want to sit somewhere quiet before, during or after the show then you can use the chill-out space.

## Refreshments



There are bars on the upper and lower foyers. There is also a bar and seating area in the room next to Box Office. You can buy food and drinks here.



This is what the bars look like.

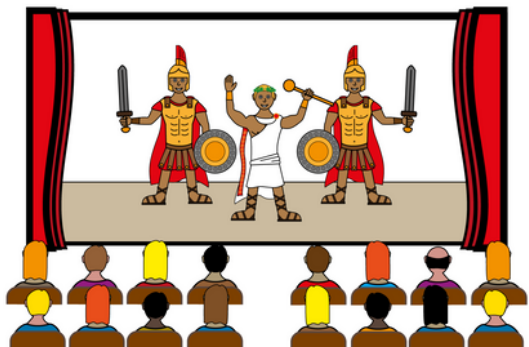
# The Main Stage



The auditorium is where you will sit to watch Jack and the Beanstalk. The Welcome Team will help you find your seat.



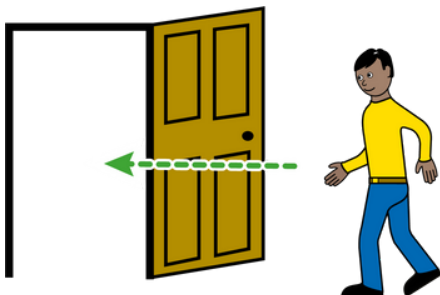
This is what the stage will look like.



When the show starts, the curtain will go up and you will see the characters performing on the stage.



It is okay to get up out of your seat if you need to move around. You can leave the room at any time and come back in when you are ready.



After the show has finished you can leave the auditorium when you are ready.



We are looking forward to your visit to Nottingham Playhouse. When you are here, you are going to see a panto called Jack and the Beanstalk.

The story is about Jack who trades his family's cow for some beans. The beans grow into an enormous beanstalk. Jack climbs the beanstalk and steals a magic harp and a special hen from the Giant's castle in the clouds. Jack escapes down the beanstalk, and the Giant follows him down it. Once Jack reaches the ground, he chops down the beanstalk which makes the Giant fall to his death.

The play will last about 2 hours and 30 minutes. When you walk into the performance space the lights will be on. There will be chairs to sit on. Theatre staff will remind you to turn off your mobile phone or put it on silent.

# The Actors

Here are the actors in Jack and the Beanstalk. There are nine actors in the play but only 7 will perform onstage.

Here they are not dressed in their costumes:



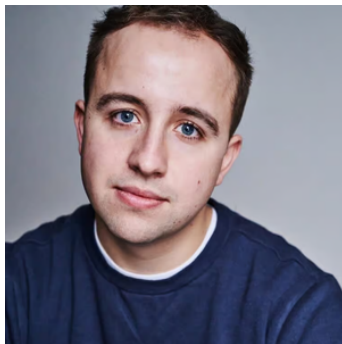
## **John Elkington**

This is John. He plays Dame Daisy Trott, who is Jack and Silly Billy's mother. He will be singing and dancing in the panto.



## **Finton Flynn**

This is Finton. He plays Jack, who is Dame Daisy's son and Silly Billy's brother. He will be singing and dancing in the panto.



## **Tom Hopcroft**

This is Tom. He plays Fleshcreep, who is the Giant's henchman. He will be singing and dancing in the panto.





### **Jewelle Hutchinson**

This is Jewelle. She plays Jill, who is the manager of Dame Daisy's farm. She will be singing and dancing in the panto.



### **Bradley Judge**

This is Bradley. He plays Silly Billy, who is Dame Daisy's son and Jack's brother. He will be singing and dancing in the panto.



### **Caroline Parker**

This is Caroline. She plays Fairy Godmother, who helps look after Jack. She will be singing and dancing in the panto. Caroline Parker is Deaf and will be performing as the Fairy Godmother using BSL as well as her voice.



### **Alice Redmond**

This is Alice. She plays Pat the Cow, who Jack sells. She will be singing and dancing in the panto.



### **Julie Hesmondhalgh**

This is Julie. She plays the Talking Harp, who Jack steals from the Giant. A recording of Julie's voice will be played when the Talking Harp speaks.



### **Sir Ian McKellen**

This is Ian. He plays Giant Blunderbore, who Jack is trying to steal from. A recording of Ian's voice will be played when the Giant speaks.

## **Young Chorus**

There will be a Young Chorus in the panto who will dance. The Young Chorus performing in your show will either be Team Biggins or Team Inman depending on what performance you attend.



# The Story



The story begins with Silly Billy welcoming the audience to Dame Daisy's farm. Silly Billy and Jack are Daisy's sons, and Jill manages the farm. They are very poor.



Their cow called Pat cannot produce milk anymore so the family have nothing to sell at the market. This means they cannot pay the rent that is due tomorrow.



Fleshcreep works for the evil Giant. He comes to the farm to tell Dame Daisy that the rent on her farm has gone up. Daisy decides that Pat must be sold at the market or else they will lose the farm.



Jack and Pat are on their way to the market when Fairy Godmother introduces herself to Jack. She has been looking out for him since his father passed away.



Jack discovers that the Giant killed his father and stole his magic harp and hen.





Fleshcreep enters disguised as Claudia Winkleman and trades 'magic' beans with Jack for Pat.



Once Jack leaves, Fleshcreep loses his disguise and reveals that he gave Jack normal beans. He plans to cook Pat for Giant Blunderbore's dinner.



Back at the farm, Dame Daisy shows Silly Billy and Jill the new Milkshed Machine that can make many different products. When they try to work the machine it breaks.



Daisy goes inside the machine to figure out what is wrong with it but she repeatedly gets products poured on her because Silly Billy and Jill keep pressing the buttons.



Jill meets Jack on his way home because she thought he might be lonely without Pat. They realise they have a lot in common and nearly kiss. They race home to tell Daisy & Billy about the beans.





Jack tells his family that he traded Pat for some magic beans. Dame Daisy is furious and throws the beans out of the window.



Jack decides to run away at dawn. Fairy Godmother uses her magic to grow the beanstalk from the beans.



The massive beanstalk reaches Giant Blunderbore's Kingdom. Jack decides to climb it so he can get revenge on the Giant and bring Pat back.

You will have a 20 minute interval. The Interval is a good time to use the bathroom or buy snacks or get a drink.



Fairy Godmother welcomes the audience back after the interval. Jack reaches the Giant's Kingdom but he feels quite lonely there.



Silly Billy and Jill have climbed the beanstalk to help him defeat the Giant. They start making their way to the Giant's castle.





Jack confronts Fleshcreep outside the castle. Fleshcreep leaves with Pat to cook her for the Giant; everyone splits up to go find them.



Jack finds Pat locked in chains in the Giant's dining room. He cannot manage to free her. When Fleshcreep comes back Jack hides in the oven.



Fleshcreep turns on the oven and exits. Jill and Silly Billy enter but Pat cannot tell them that Jack is stuck in the oven because Fleshcreep has gagged her. When Jill realises that Jack is in the oven she frees him.



The Giant enters and Jack plays the magic harp to send him to sleep. Fairy Godmother uses her wand to break Pat's chains. Silly Billy and Pat go to find the hen.



As the Giant begins to wake up, Fairy Godmother, Jack and Jill run away. Fleshcreep and his minions chase after them.





Dame Daisy, Silly Billy and Pat find the hen in the Giant's Treasure Vault. Daisy sings a song to send everyone to sleep. One by one they are scared by the ghost.



Jack and Jill find them, and their happiness makes them kiss each other. However, Fleshcreep is getting close. Everyone runs to climb down the beanstalk.



Jack cuts down the beanstalk with an axe whilst the Giant is climbing down it. The beanstalk comes down and this makes the giant fall to his death.



Dame Daisy tells Jack that she is proud of him and Fleshcreep apologises to everyone. They notice that the hen lays golden eggs so the Trots never have to worry about money again.



Jack and Jill get married. They will now run the farm and live happily ever after.

r

## **Interactive times during the show**

During the panto the actors will ask the audience to join in. They will ask the audience to do actions like a Mexican wave or cross their fingers.

The actors will ask the audience questions like 'Should I?' or 'Is it behind me?' Audience members will likely shout, boo, or cheer at the actors with or without prompt. You can join in too, if you would like!

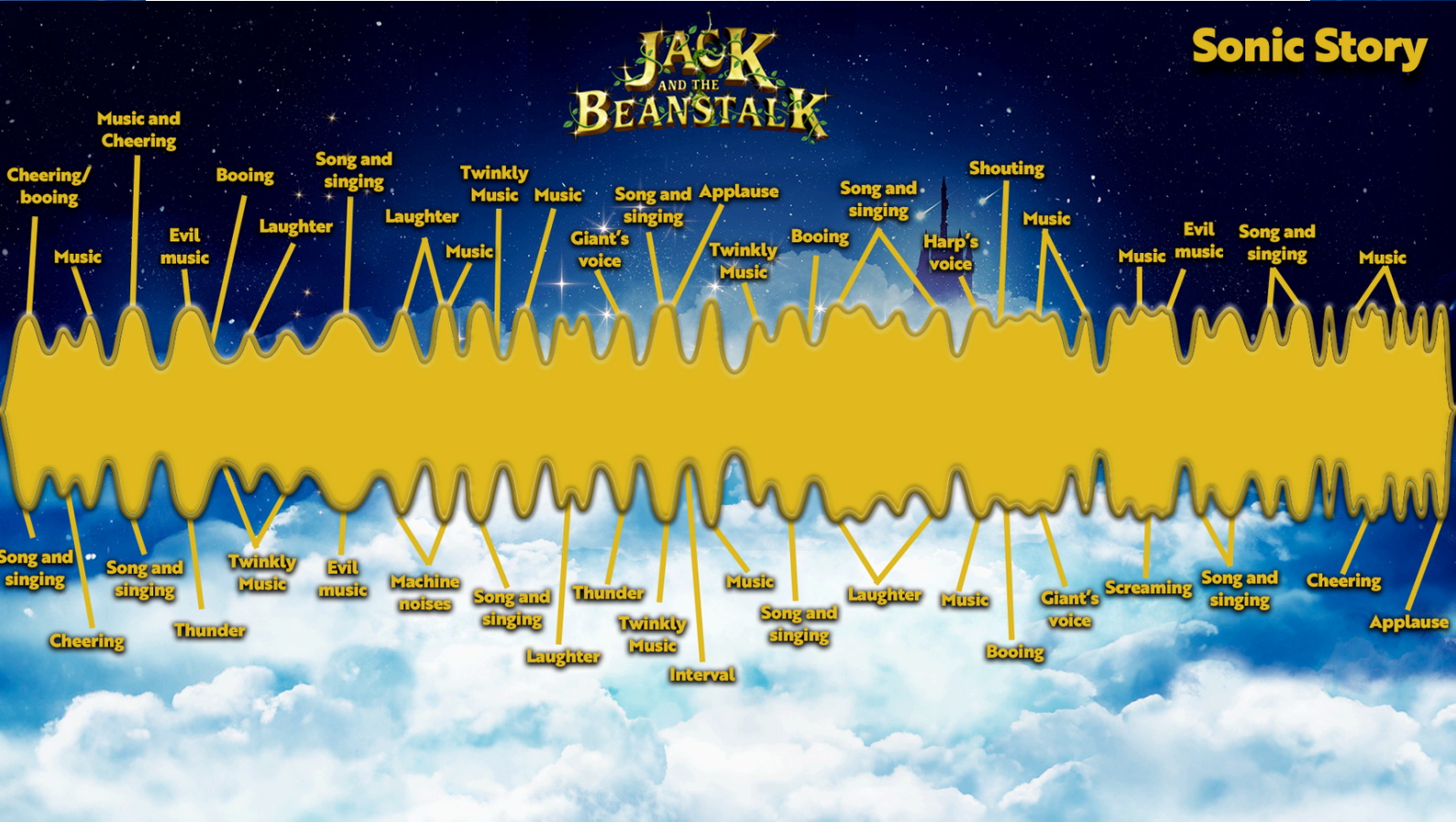
Towards the end of the panto, one of the actors will say a list of shout outs and happy birthdays to people in the audience who will likely cheer back. Everyone will sing Happy Birthday.

The actors will ask the audience to sing 'Old Macdonald had a farm' and bring children onstage to sing as well.



# Sonic Story

During the panto there will be lots of audience interaction.



# Sensory Triggers

Sensory triggers are events or stimuli that are sensed by our five primary senses and can cause a strong reaction.

For example, sudden lighting changes or unexpected sounds.

Sensory Triggers in Jack and the Beanstalk:

Scene 1.1

- After Silly Billy says 'It's all because of that horrible Giant Blunderbore' there is the sound of thunder and some flashing lights

Scene 1.2

- When Fairy Godmother enters there are pyrotechnics, creating a loud popping sound and a flash of bright light.

Scene 1.3

- After Jill says 'Pull this lever. And: Presto' there are loud popping sounds and lights flash - this also occurs after Silly Billy's line 'I'll switch it on. Here' and Jill's line 'My turn. I switch it on'

Scene 1.5

- After Fleshcreep says 'It's too late. Oh yes, it is' there is a sound of thunder and the Giant speaks loudly

Scene 1.6

- After Dame Daisy says 'I'll go to the foot of our stairs' there is a loud cracking sound



### Scene 2.3

- Where Jill says 'Where's Jack?' there is a sound of loud banging
- After Jill says 'In the oven?! Oh no!' smoke pours out of the oven onto the stage
- When Pat says 'It's too late!' a large fake Giant enters and there is lots of smoke and lightning flashes
- Each time the Ghost makes eye contact with one of the characters a loud scream is played

### Scene 2.5

- After Silly Billy says 'Jack, here!' there is a loud sound of wood splintering
- After Jill says 'Take shelter' there are flashes of bright light, smoke pours out onto the stage and there is a massive crashing sound - it will take a few seconds for the lighting to return to normal

When the panto is over and the audience are applauding a machine above the audience will release fake snow. Confetti will be launched out of another machine and this will make a loud popping sound.

# Key Words and Symbols



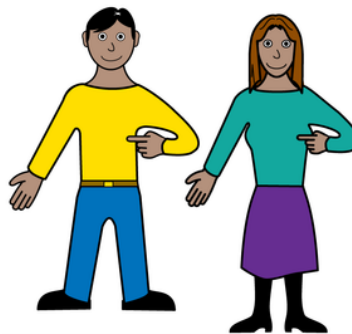
Overcoming Challenges



Greed

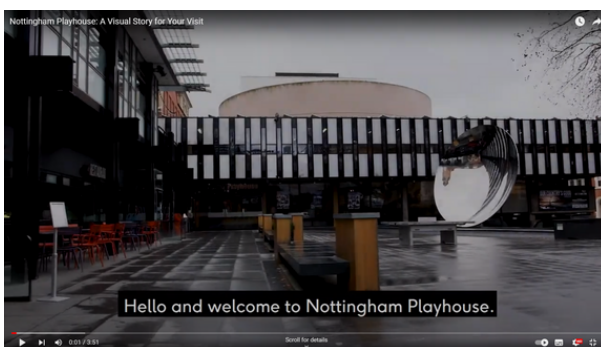


Trust



Family

## A Video Visual Story for Your Visit



A video visual story is available on our website.

Here you can see the auditorium, foyer spaces and Box Office area. Visit the Relaxed Performances webpage to see it.

<https://nottinghamplayhouse.co.uk/your-visit/access/relaxed-performances/>

Thanks to  easy on the  for the use of their image bank © LYPFT  
[www.easyonthei.nhs.uk](http://www.easyonthei.nhs.uk)