



# AMPLIFY FESTIVAL 2024

FULL PROGRAMME OF EVENTS

# WELCOME

Amplify Festival is a brilliant chance to discover and support work being made by local artists at all stages of development, to find out more about the process of making theatre and to be a part of the creative journey for work in the earlier stages.

This year the programme has been selected through open callout with the support of volunteers from across our Participation programmes and Amplify network as well as Nottingham Playhouse staff. Thanks to our panel which included: Rehannah Mian, Wendy Barnes, Matt Miller, Sharon White, Joanne Rogers, Rebecca Bleasdale-Smith, Hugh Dichmont, Leila Glen and Layla Hassan. We're also delighted to be partnered with Queer Up, Duck!, Nottingham's LGBTQ+ arts festival.

We've got work that has toured elsewhere and is 'coming home' to Nottingham, and work that has never been in front of an audience before, we've got work aimed at children, disabled, women and queer led work, autobiographical work, comedy, cabaret, gig theatre and more 'traditional' theatre pieces. For artists there are opportunities to connect, network, learn and engage with local work. We've asked artists to consider access at all stages, and are pleased to be able to offer BSL interpretation across much of the programme. The programme also includes workshops delivered in partnership with The Writers Guild and In Good Company, our first ever Amplify Access Assembly, specifically for Deaf artists, and we're ending the festival with Amplify: Over and Out, with local DJ Kilo who will have us dancing the night away!

It's an absolute privilege to be in a position to offer space and support to so many Midlands artists and I hope that audiences and artists alike enjoy connecting throughout the Festival week.

See you at the shows!

**Beccy D'Souza**  
**Amplify Producer**  
**Nottingham Playhouse**

**With thanks to**  
**Production Assistant - Leila Glen**  
**Access Co-Ordinator - Nikki Charlesworth**

## Festival pricing

Tickets are offered at subsidised or full price to all audience members. There are no 'qualifying criteria' for a subsidised place. If you can afford a full price ticket, please buy one, as this will support Amplify in continuing to offer free and subsidised development opportunities for artists across the Midlands region. See more about what we do for artists in the Midlands [here](#).

## Multi-buy Offer

Across Amplify Festival, you can take advantage of our Multi-Buy offer. Buy tickets to more than three shows and get 25% discount. (Discount will be applied in basket. Discount not available on Curious Investigators and Writer's Showcase). See how to book your tickets below.

## How to book

Book now by calling our Box Office on 0115 941 9419, or head to our website [here](#).

## Triggers and Advisories

For Triggers and Advisories for all shows, please visit our website [here](#).



Supported using public funding by  
**ARTS COUNCIL  
ENGLAND**

# MONDAY

## 21 OCTOBER 2024

Neville Studio

SHOW

7.45pm

### Nottingham Playhouse Writers' Showcase

Since February 2024, Subject Object have been working in partnership with Nottingham Playhouse to support ten East Midlands writers as they worked towards writing their first plays. Working with Subject Object Artistic Director Nathan Ellis, the writers have developed their craft and honed their plays to prepare them to meet their first audience.

We're delighted to kick off Amplify Festival with rehearsed readings of excerpts from all ten new plays, directed and performed by creatives from across the region.

Be among the first to see these debut plays!

Readings will be directed by Jessy Roberts and Beth Kapila.

Price: £5

Running Time: 120 mins

Age suitability: 16+

# TUESDAY

## 22 OCTOBER 2024

Neville Studio

SHOW

11.30am

3pm

### Curious Investigators

A cracking new adventure for 3-7 year olds

Scribble and Clipboard have a job to do: sort the recycling. But Scribble keeps finding new things to investigate. When she discovers a mysterious egg hidden in the rubbish, the pair need the audience's help to rescue an unborn chick. Can we save the precious egg from a smashing? And what will we discover along the way?



By One and Tenth Human

Price: £12

Running Time: 40 mins

Age suitability: 3-7

CONNECTIONS

6pm

Company One

### Amplify Access Assembly: Deaf Artists Have Your Say

We are keen to connect with Deaf Artists in the region, to have a conversation about what provision already exists within Amplify, what is working and what is not, and what else we can do to support you and your artistic practice, whilst also creating an opportunity for Deaf artists to come together. This is a first for Nottingham Playhouse and we hope to host future **Amplify Access Assemblies**, to connect with and support other Deaf and disabled artists in the region over the next year.



Price: free/suggested donation of £5

# WEDNESDAY

## 23 OCTOBER 2024

CONNECTIONS

DEVELOPMENT

2.30pm

### In Good Company: IGC Venues Tour Guide Launch / Tour Pack Workshop / Networking

Inspired by Venue's Norths Routes In, we've assembled our partners to let artists know the easiest ways to get in touch and get programmed at their venues. We'll be launching this guide at Amplify Festival. Well now you know now what the venues are searching for, what next? This will be followed by an informal session in creating the perfect tour pack led by Hannah Stone. She'll be talking through what to put in your tour pack and how to talk about your performances. Spaces are limited so be sure to book on to learn more.

Then at 4pm join us for a networking event, meeting local creatives and fellow artists to chat about your work, upcoming shows, and make connections with the Midlands scene. Chat with producers from In Good Company, and join us to watch some incredible theatre at the Amplify Festival.

Company One



Price: Free

Running Time: IGC Venue  
Tour Guide Launch - 90 mins  
IGC Networking - 1hr

SHOW

5.45pm

### Fixing

Can something broken ever truly be mended?

When Matt was little, their dad bought a classic car. A 1954 Sunbeam Talbot Mark II. Dad had ideas that he and Matt would do it up, repair, rebuild together. They never did, and the car festered in a garage.

I mean, Dad had just been through a divorce.

Now in their 30s, Matt would like to learn how to fix a car engine. They'd like to learn a bit more about Dad, and that time, when Dad and Mum split up. The time when Matt and Dad were closest.

Matt can't do this alone, which is tricky for a solo show. That's where Matt's drag alter-ego Natalie Spanner comes in. She knows all about things that girls like Natalie know about. Like how to build an engine. About maintenance, care and repair.

Together, Matt and Natalie will try to ask, in an increasingly broken world, how might we repair ourselves, together?

Neville Studio



By Matt Miller and Peader Kirk

Price: £8

Running Time: 45 mins

This will be a chilled performance. Find out more about our chilled performances on page 23.



# WEDNESDAY

## 23 OCTOBER 2024

SHOW

7pm

### Bare Bones

**We've heard it all before haven't we? The cancer narrative - she's "so so brave" and "incredibly strong". The patronising messages and latent ableism that lie underneath them.**

**Bare Bones** follows the experience of Molly Turtle, a young woman in her 20s, diagnosed with bone cancer, now back in the "real world". With a fresh new disability, changing relationships and a whole new perspective of womanhood, reproduction, new body, self worth and mortality – it's the oft-forgotten little 'ancer' that follows the Big C.

Written by Three Compost Bins and based on co-creator Beth Keller's lived experience, **Bare Bones** is a 45 minute work in progress play that exposes the limitations of the Cancer narrative in representing 'what comes next', with a wee bit of audience interaction and some laughs along the way.



By Three Compost Bins

**Price:** £8

**Running Time:** 45 mins

**Age suitability:** 14+

This will be a chilled performance. Find out more about our chilled performances on page 23.



Neville Studio

SHOW

8.20pm

### Body or Soul?

**Would you rather sell your body, or your soul?**

With a "Sliding Doors" concept, the play tells two stories of the same female character. In one world, she works for a multinational commercial conglomerate whose ethics go against everything she believes morally, but the job pays for the life she's always aspired to. In another alternate version of her life, she doesn't take the job. Instead, she earns money on her terms by becoming a "cam girl" creating provocative content online in order to fund her bigger creative ambitions.

Both paths involve choices others question. But which is "better"?

**Body or Soul** shines a light on the complexity of the choices we make about our lives, our finances, our bodies and our morals. No choice is perfect, ever, but when it comes to the contempt, judgement and snobbery that's still directed towards anything that comes close to "selling yourself", we want to ask this: would you rather sell your body, or your soul?



By Fury Theatre  
Supported by The Asylum Players and Chronic Insanity Theatre.

**Price:** £14

**Running Time:** 75 mins

**Age suitability:** 16+



Neville Studio

# THURSDAY

## 24 OCTOBER 2024

### CONNECTIONS

11am

### Writers Table co-working with the Writers Guild

Join with fellow playwrights to talk about your work, share extracts, support each other and develop new connections.

### DEVELOPMENT

2.45pm

### Writers Guild: Contracts and Copyright

**Understanding what you've been asked to agree to in a contract is a vital aspect of any writer's career. But how do you know what makes a good contract - or a bad one? And how can you be sure you are protecting yourself, your work and your rights?**

Join union organisers Joe Abel & Eleanor Dawson from WGGB (the writers' union) for a 90-minute interactive workshop to demystify the contractual process in theatre, TV and film writing.

This workshop will be run hybrid, in person and remotely via zoom.

### Company One

These are Amplify members events

**Price:** Free/suggested donations of £5

**Running Time:** Writers Table with the Writers Guild - 2hr 45 mins  
Writers Guild: Contracts and Copyright - 2hr

### SHOW

6.20pm

### The Distance

Inspired by his experiences as a teenage international long-distance runner, **The Distance** is a new work-in-progress solo show from award-winning Nottingham theatre-maker and former GB athlete Ben Norris, exploring ambition, identity and how tightly who we are is tied to what we do.

It follows teenager Chris as he first discovers a love for cross-country and his Olympic dream is ignited. Getting to know his new body leads to very serious things like body dysmorphia and disordered eating. But also pooing in someone's front garden immediately before a race.

Part play, part extreme workout, **The Distance** will be an extraordinarily physical performance featuring a treadmill onstage. But whether you're a fan of sport or not, everyone has their own relationship with ambition and sacrifice. Do we live to work, or work to live? And is it ok to defecate on a stranger's lawn in pursuit of greatness?

**The Distance** will invite you to reflect on these important questions and more, as well as featuring jokes, flapjack and some big tunes. And possibly nudity. It's a work-in-progress, so it's all to play for.

### Neville Studio



Writer and performer: Ben Norris  
Director: Julia Locascio

**Price:** £9

**Running Time:** 70 mins

**Age Suitability:** 16+



# THURSDAY

## 24 OCTOBER 2024

SHOW

8.15pm

### Amplify Shakes It Up: A Work in Progress Double Bill

A double bill of work in progress performances with a Shakespearean twist.

#### Part one: Exit Pursued by DWP

Dear Shakespeare Enthusiast, Thank you for your feedback, but where does it explicitly say that Hamlet/Ophelia/Malevolio/Juliet/Bolingbroke/Puck insert everyone here (minus Richard III) is not Disabled?

In Shakespeare's England disabled people were very much the norm, life was tough, people became disabled, but they weren't segregated, they were key roles within communities, so common that disability was not even mentioned in a script.

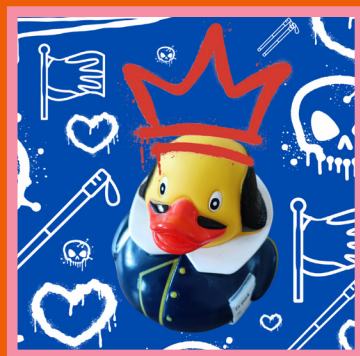
Audiences are invited to pick a play, experience the poetry performed by performers with integrated audio description and BSL, and be part of reclaiming these classic characters as their feisty, defiant, harrowing, sexy, strong, funny, disabled and deaf selves.

Neville Studio

Price: £10

Running Time: 100 mins

Age Suitability: 14+



By Benjamin Wilson, Laura Goulden and Alexandra Whiteley

This will be a chilled performance. Find out more about our chilled performances on page 23.



Neville Studio

#### Part Two: Below Decadence

The Tempest meets BravoTV, **Below Decadence** tells Sebastian's story in search of power, wealth and influence as he navigates mega-yachts and the mega-rich.

Part stand-up comedy, part character monologue, **Below Decadence** asks what's a white lie to the filthy rich? And what's too far for a villain?



Writer: Simon Marshall  
Director: Alice Fitzgerald  
Performer: Curtis Dunn

This will be a chilled performance. Find out more about our chilled performances on page 23.



# FRIDAY

## 25 OCTOBER 2024

SHOW

2.30pm

### The Snare and Feral

"From life, to death, and life again ... round and around it goes".

Beyond the land of the living, four souls find themselves trapped in a tavern somewhere between death and wherever we go next. Through dreams and songs they seek to remember who they were when they were alive.

But when another soul arrives their carefully crafted songs are thrown into chaos, leaving them asking, who was I really? Through original folk music, playful humour and storytelling, this story explores our dominion over the natural world and what it means to be sorry for our mistakes.

The Daywalkers Collective is an Actor-Musician theatre company with members from the East-Midlands, Hong Kong and Cornwall. Our aim is to create high quality, original folk music and theatre that entertains our audience whilst also raising awareness to the issues our shows revolve around.

Company One



By Daywalkers Collective

Price: £8

Running Time: 45 mins

Age suitability: 8+

SHOW

6.30pm

### Did I Mention I'm Adopted?

Michelle allows us to share in her unique and moving story.

A story of adoption, identity, the search for 'self' and a yearning to connect with any shared past and present genetic flesh and blood. This gives us a window into the journey she embarked upon, in an attempt to trace her birth relatives. This fascinating quest transformed her tattered adoption papers from being an almost fictional narrative, into real people, with real names, each having their own very real and individual lives and stories that add to their collective jigsaw puzzle.

It's complicated, it's mixed, it's multi-layered, with twists and turns. There's questions and answers, and more questions ... and they still can't believe it ever happened, even now! So how and where exactly did they find each other? It's hard to know where to begin, but, here goes ... Join Michelle Mother Hubbard in conversation with the first blood relative she ever managed to miraculously trace: her sister, Dawn, as they recollect the moment they met, and beyond.

Neville Studio



By Michelle 'Mother' Hubbard

Price: £9

Running Time: 70 mins

Age Suitability: 12+





# FRIDAY

## 25 OCTOBER 2024

SHOW

8.30pm

### We Are Who We Are: A Triple Bill

A triple bill of work in progress showings exploring why we are, who we are.

#### Part one: Finding The 1...2...3...

How do we find our 123? A fun & silly show about love & relationships.

'Side-splitting! Rib-tickling!'  
Loughborough Echo on a previous show

'A joyous bundle of energy from start to finish'  
Simon Brodikin on a previous show

Price: £9

Running Time: 75 mins

Age suitability: 15+



By Ishi Khan



Neville Studio

### Part two: I Remember Everything

What's it like having 100% success rate on dating apps? Quynh's got her type down to a T—toxic, traumatic, and tragically distant... It's time to swipe local!

Quynh, a sharp-witted Nottingham-born Vietnamese woman in her thirties, is returning to dating... locally, after a six-year relationship drought of disappointment and disaster, she's beginning to wonder what's up?

When yet another potential timewaster enters the picture, Quynh does her usual cut. But this guy surprises her – he comes back. This time will be different, right?

**I Remember Everything** is a humorous, heartfelt, messy and honest exploration of what it takes to break the cycle, balance heritage with contemporary British life, navigate modern interracial relationships and reconcile with past traumas.

Neville Studio



By Linh Huynh



# FRIDAY

## 25 OCTOBER 2024

### Part Three: Vegemite Sandwich

"I wish to acquaint you with some of the occurrences of the present, past and future."

Australian-born, English-raised theatremaker Eden Peppercorn pulls apart their cross-hemisphere family history in the hopes of unravelling just what their mixed-heritage identity means from the other side of the world.



By Eden Peppercorn



### SHOW

1.30pm

2pm

3.30pm

4pm

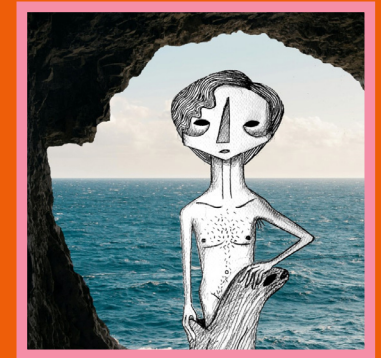
### Robert (1849)

**Robert, a Victorian man from the Midlands, has always been enchanted by the coast.**

Throughout his life he has been drawn to the sea, so much so that he became a cartographer, spending his days walking and drawing the coastline. But the sea is a long way from his home in the Midlands, and on one particular walk along the coast Robert is forced to question where it is he truly belongs.

Join us for a unique sensory folktale experience about the Midlands and the pull of the world outside of what you've always known. Using multi-sensory methods of storytelling, including soundscapes, live foley, touch, and integrated audio description, this show is a gentle ode to the known and allure of the unknown, made and performed for small groups.

### Understudy



By Daniel McVey  
Performer - Sophie Jane Corner  
Sound Designer - Tom Codd

**Price:** £3

**Running Time:** 15 mins

**Age suitability:** 8+

**RP** All performances

**AD** All performances

**Hand icon** 4pm performance



# SATURDAY

## 26 OCTOBER 2024

SHOW

3.30pm

5pm

### Relatively Dead

You can't choose what you inherit.

**Relatively Dead** is about two sisters, Daisy and Sunny, whose lives have been shaped by their eccentric father. With a childhood filled with stories and riddles, the sisters grew disillusioned with their old man living in the middle of the woods, and drifted apart and away from one another. Now, after their father has died, they must come together to clear out the old shack before it's sold on. Years may have passed, but old wounds never quite heal, and the sisters soon learn that maybe not every thing their father told them was a whimsical tale. There's something in that old house, and it's been waiting for them for a long, long time.

This is a work in progress dark comedy exploring generational grief, and the cycle we must break to grow. Sunken Village explores what it means to tell ghost stories in our modern age, using sound, sense, and the absurdity of being afraid of what goes bump in the night.

Understudy



By Sunken Village

**Price:** £8

**Running Time:** 45 mins

**Age Suitability:** 15+

The 3.30pm show will be a chilled performance. Find out more about our chilled performances on page 23.



All performances



SHOW

7pm

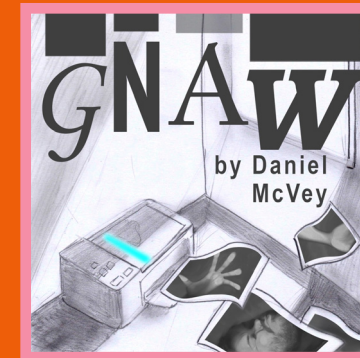
Neville Studio

### Gnaw

George is just a guy.

George spends his time photocopying papers for his boss and imagining what his life could be if he actually made a change. On the way home from work George sees something he wishes he hadn't. George just wants to forget it. George just wants to live in a bubble, with the people he imagines, the ones he dreams about. But as George loses himself in dreams of busybodies and mountaineers, the hopeless romantics, the longsuffering, and the bizarre, something, gnawing out from inside him, won't let him forget what he saw.

Alan Bennett's Talking Heads meets Tales of the Unexpected and The Twilight Zone in this exciting and experimental piece of new writing.



By Daniel McVey  
Movement Director - Sophie Jane Corner  
Lighting Designer - Sam Osborne

**Price:** £14

**Running Time:** 60 mins

**Age Suitability:** 14+

This will be a chilled performance. Find out more about our chilled performances on page 23.



# SATURDAY

## 26 OCTOBER 2024

Neville Studio

SHOW

8.45pm

### Into The Pit

It's all getting a bit much up here, isn't it, on top of the world?

What do we do when the grass is no longer green on either side? Instead of putting your head in the ground.. why not join spooky entity, Coal Minor, and jump Into the Pit?

Slip down through the hands of time in Coal Minor's whistle stop tour of the history of coal mining in the UK. Unearth the stories of the mining industry and the people that made it. Help Coal find a little light in the dark in this surreal, immersive underground coal mining cabaret.



By AK Golding

Price: £8

Running Time: 45 mins

Age Suitability: 16+



CONNECTIONS

9.30pm

### Amplify Festival: Over and Out Afterparty

It's over, everyone out!

Join us in the Company Bar with live DJ, DJ Kilo from 9.30pm til late to dance the night away.

Discounts at the bar for Amplify artists.

Come and celebrate!

## Accessible performances



**Audio Described performances:**

A live verbal commentary providing an explanation of the visual information that blind or partially sighted people might require in order to access the show more fully, delivered to the audience member via a personal headset.



**Relaxed performances**

We offer performances that are more relaxed for those who benefit from a show where the loud noises are reduced, elements of surprise are kept to a minimum and moving around the auditorium is not a problem.



**Captioned performances:**

Provided for Deaf, hard of hearing or deafened people. Captioning converts spoken word into text and is presented on a screen at the side of the stage. The text scrolls at the same pace as the actors speak.

**Chilled performances:**

Chilled performances are open to all audience members. There won't be any changes to the show itself but movement in and out of the auditorium is allowed, there is less emphasis on the audience being quiet during the performance, and there will be a separate chill-out room for any audience members that require it. They are suitable for anyone who might need to make a noise or ask a question to their companion during a show, older people who are experiencing dementia or Alzheimer's, those who may be nervous about being in a traditional theatre environment, Autistic people, people with sensory and communication needs and anyone who would benefit from a more chilled environment.



**British sign language interpreted performances:**

Provided for people for whom British Sign Language is their first language. The interpreter usually stands on the side of the stage, lit by a single spotlight and faces the front.

# FESTIVAL TIMETABLE

## MONDAY 21 OCT

7.45pm - 9.50pm	Nottingham Playhouse Writers' Group Showcase ●	Neville Studio
-----------------	--	----------------

## MONDAY 21 OCT - FRI 25 OCT

10am - 5pm	Amplify Artists Co-Working Space (free tea and coffee provided) ●	Company One
------------	---	-------------

## TUESDAY 22 OCT

11.30am - 12.10pm & 3pm - 3.40pm	Curious Investigators ●	Neville Studio
6pm - 7.30pm	Amplify Access Assembly: Deaf Artists Have Your Say ●	Company One

## WEDNESDAY 23 OCT

2.30pm - 4pm	Amplify: In Good Company - Networking and IGC Venues Tour Guide Launch ● ● ●	Company One
4pm - 5pm	In Good Company Networking ●	Company One
5.45pm - 6.30pm	Fixing ●	Neville Studio
7pm - 7.45pm	Bare Bones ●	Neville Studio
8.20pm - 9.35pm	Body or Soul ●	Neville Studio

● Show ● Connections ● Development

# FESTIVAL TIMETABLE

## THURSDAY 24 OCT

11am - 1.35pm	Writers Table co-working with The Writers Guild ●	Company One
2.45pm - 4.45pm	Writers Guild Workshop - Contracts and Copyright ●	Company One
6.20pm - 7.30pm	The Distance ●	Neville Studio
8.15pm - 9.55pm	Amplify Shakes It Up: Double Bill - Exit Pursued By DWP and Below Decadence ●	Neville Studio

## FRIDAY 25 OCT

1.30pm - 1.45pm, 2pm - 2.15pm, 3.30pm - 3.45pm, 4pm - 4.15pm	Robert (1849) ●	Understudy
2.30pm - 3.15pm	The Snare and Feral ●	Company One
6.30pm - 7.40pm	Did I Mention I'm Adopted? ●	Neville Studio
8.30pm - 9.40pm	We Are Who We Are: Triple Bill - Finding the 1...2...3... I Remember Everything Vegemite Sandwich ●	Neville Studio

## SATURDAY 26 OCT

3.30pm - 4.15pm & 5pm - 5.45pm	Relatively Dead ●	Understudy
7pm - 8pm	Gnaw ●	Neville Studio
8.45pm - 9.30pm	Into The Pit ●	Neville Studio
9.30pm - late	Amplify Over and Out afterparty ●	Company One