

## **Exit Pursued by DWP Visual Story**

*Where is the performance happening?*



## ***What is this performance?***

*This is a work in progress sharing not a finished show.*

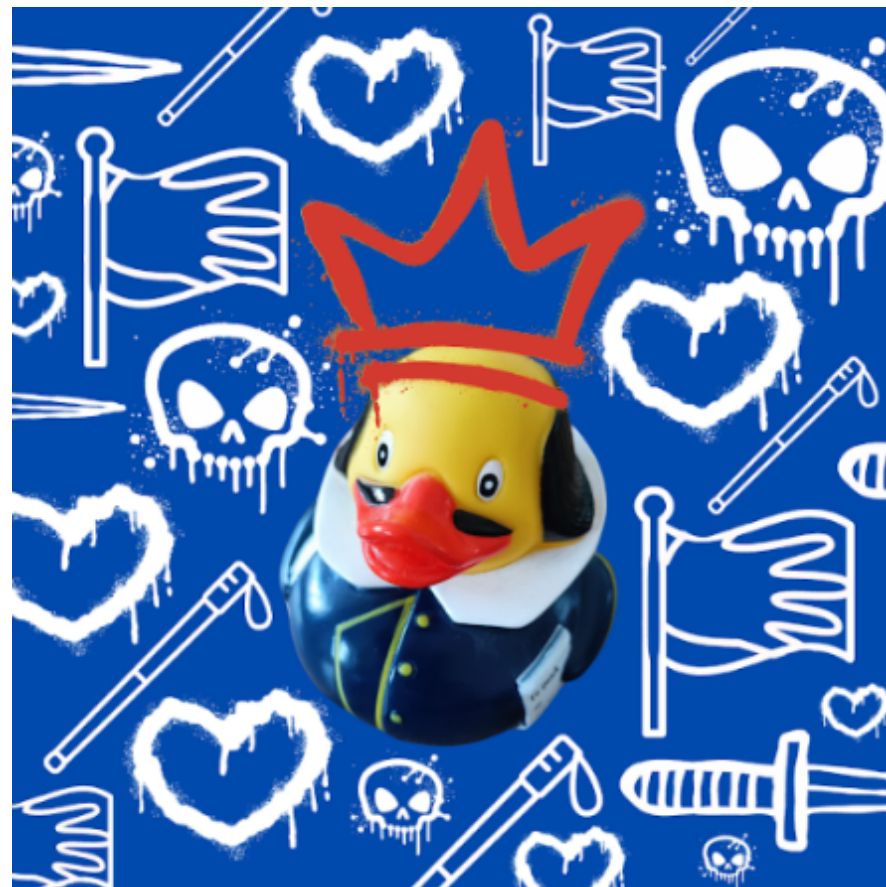
*The team wants to show that Disabled and Deaf people are great at performing Shakespeare's characters.*

There is Audio Description.

There is BSL Interpretation.

There are captions.

This is a relaxed space.



## *What happens in the performance?*



A scene from Macbeth.

We talk directly to the audience.

Letters of complaint that disabled people are performing Shakespeare characters.

The audience can pick speeches for the performers to share. Ben will introduce some more Shakespeare speeches.



We want your feedback on how to develop the piece.

We will give you a QR code to scan and answer some questions.

Or you can write and draw on a form.



BSL  
Interpreter



The actors

## *Who is in the performance?*



*Alex, the Director*



*Ben, an actor who is blind.*



*Laura, a BSL Interpreter*

*There are also more disabled and deaf actors that will join the team for different shows.*

*Today we have two guest actors.*