

NOTTINGHAM PLAYHOUSE

ANNUAL REVIEW 2022/23





"I wanted to write and thank you all sooo much for the work experience week. I have had the most amazing time and had no idea about all the ways I can work in theatre - it has changed my life and horizons loads."

Work experience participant



We are delighted to bring back the Nottingham Playhouse Annual Review, a chance to reflect on our achievements in the year April 2022-March 2023. Early in 2022, there was still some hesitancy in audience attendance, but we are delighted to say that this year, our audiences have returned with confidence and enthusiasm, rather bucking the broader trend across the theatre industry. Thank you for your continuing support.

In a year of powerful productions, highlights included **First Touch**, a gripping and heartfelt drama about historic sexual abuse in youth football, based on conversations with whistle-blowers. The world-premiere of **Identical**, a new musical based on the novel *The Parent Trap* by Erich Kästner and directed by Sir Trevor Nunn, had music and lyrics by the award-winning Stiles and Drewe. Adrian Scarborough adapted Alan Bennett's novella, **The Clothes They Stood Up In** and performed alongside Sophie Thompson in this wonderful, funny play. And we finished the year in traditional style with our legendary pantomime **Dick Whittington**, and **Goldilocks and the Three Bears** for younger children.

Early 2023 saw us produce **The Beekeeper of Aleppo** in conjunction with UK Productions, a landmark production highlighting the plight of refugees at a particularly relevant time, and which went on an extensive, commercially and critically successful tour.

We first discovered Samson Hawkins through an open call-out to local artists and his new play **Village Idiot** was brought to the stage through Ramps on the Moon in a co-production with Theatre Royal Stratford East, smashing its sales target and gathering many admirers of its refreshingly honest approach along the way.

Our Participation team continued to work tirelessly, expanding the reach and range of activities offered. Welcoming our local community to take part in creative arts has never been more important, as the cost of living and other barriers narrow people's worlds.

We were thrilled to see our Amplify programme expand under the direction of Beccy D'Souza, with around 500 local artists now benefitting from Amplify Membership, giving them access to mentoring, networking, professional workshops and career development.

Most of all, we have to thank our incredible audiences, members, funders, sponsors, board and staff. It is only through your support that we can continue to deliver world-class theatre on your doorstep.

Stephanie Surr
Stephanie Surr
 Chief Executive

Adam Penford
Adam Penford
 Artistic Director

I am very proud and immensely grateful for all the hard work of every member of the team at Nottingham Playhouse. The sector has taken a hard knock due to the pandemic and the cost-of-living crisis, but, led by Stephanie and Adam, we have produced some ground-breaking and sell out work, celebrating diversity and inclusion, supporting new writing and bringing joy with top class pantomime.

We continue to offer high quality theatre for the people of Nottingham. This is in addition to our huge participation and educational programme which runs across the city and county. The organisation, which is a charity, remains an important part of the city's visitor economy with our touring productions, putting Nottingham on the map regionally, nationally and internationally. Thank you to all those that buy tickets to support us or attend our community groups.

Amanda Farr, Chair

SHOWS

**Nottingham Playhouse Theatre Company,
Northern Stage and Royal Lyceum Theatre Edinburgh**

RED ELLEN

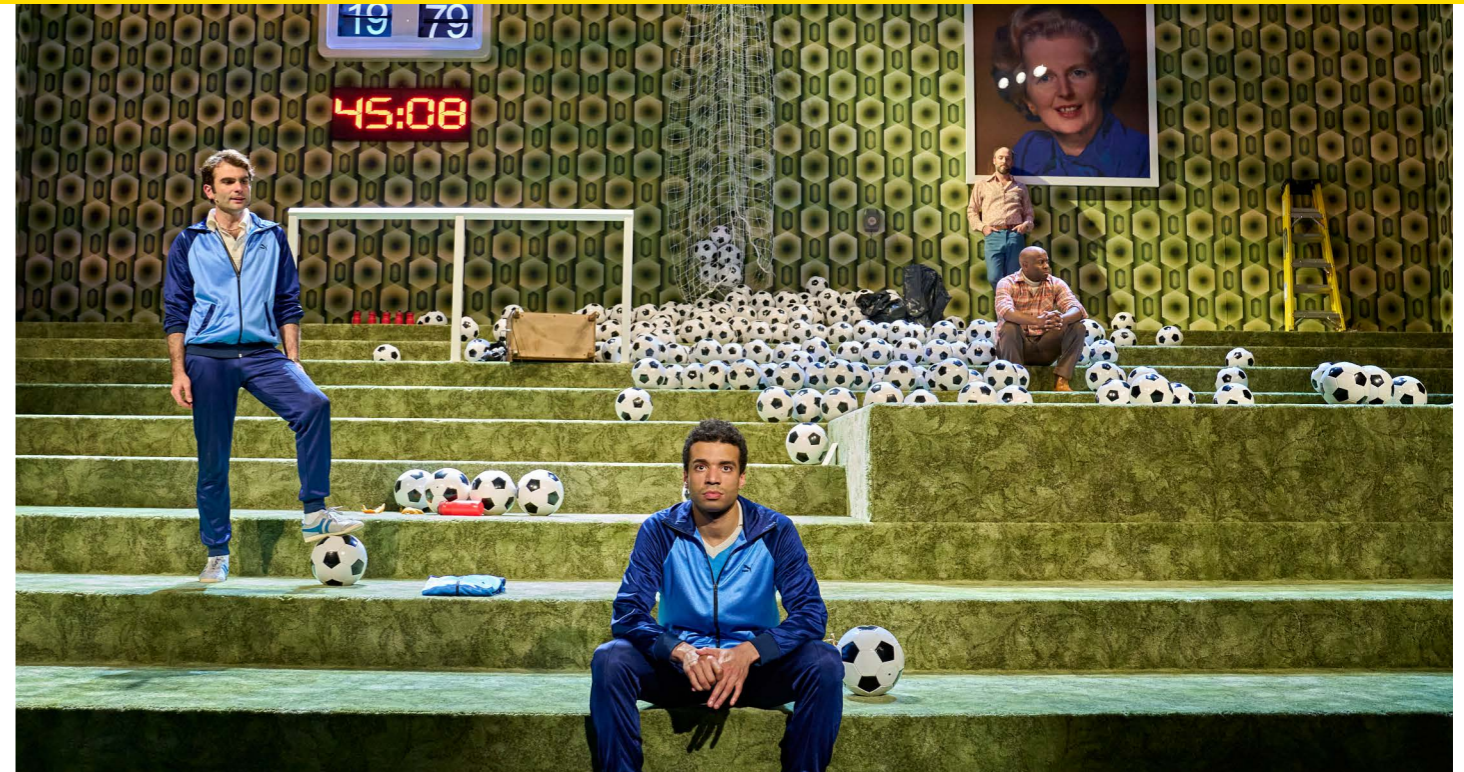
by Caroline Bird

Wed 13 – Sat 30 April 2022

★★★★★ The Times ★★★★★ The Stage

What our audiences thought:

"Fantastic play. Resonated with today's world."
"This was absolutely brilliant, phenomenal work.
Great writing, great cast!"



Nottingham Playhouse Theatre Company

FIRST TOUCH

by Nathaniel Price

Sat 7 – Sat 21 May 2022

★★★★★ East Midlands Theatre

What our audiences thought:

"So beautifully written."
"Hard-hitting, heart-breaking."
"Clever, powerful and sensitive staging."





**William Shakespeare's
A MIDSUMMER
NIGHT'S DREAM**
adapted by Martin Berry
Wed 13 – Sat 16 July 2022

*'If we shadows have offended,
Think but this, and all is mended,
That you have but slumbered here
While these visions did appear.'*

(Puck, Act 5 Scene 1)



**Nottingham Playhouse Theatre Company
and Kenny Wax Ltd**

IDENTICAL

based on the novel by Erich Kästner
Tue 26 Jul – Sun 14 Aug 2022

★★★★★ The Telegraph ★★★★★ The Guardian

What our audiences thought:

"Stunning performances."
"Absolutely fabulous, highly recommend."
"I loved it and was completely charmed."



Nottingham Playhouse Theatre Company
THE CLOTHES THEY STOOD UP IN
by Alan Bennett
adapted by Adrian Scarborough
Fri 9 Sep – Sat 1 Oct 2022

★★★★★ The Stage ★★★★★ West End Theatre

What our audiences thought:

"Funny and powerful."

"Absolutely brilliant, stellar performances."

"Very funny play, brilliantly set."



A Sheffield Theatres and Ramps on the Moon co-production
MUCH ADO ABOUT NOTHING
by William Shakespeare
Tue 11 – Sat 15 Oct 2022

★★★★★ The Stage
★★★★★ The Reviews Hub

What our audiences thought:

"Inclusive, accessible and diverse."

"Vibrant, filled with outstanding performances."

"Everything I think theatre should be, and more."



SHOWS

Nottingham Playhouse Theatre Company and Mercury Theatre

PINOCCHIO

by Sarah Middleton

Sat 12 – Sun 13 Nov 2022

★★★★★ The Stage

★★★★★ East Midlands Theatre

What our young audiences thought:

"I liked it when Pinocchio's nose went long."

"I liked when Pinocchio did the floss."



Nottingham Playhouse Theatre Company

GOLDBLOCKS AND THE THREE BEARS

by Anna Wheatley

Thu 8 – Sat 31 Dec 2022

★★★★★ East Midlands Theatre

What our audiences thought:

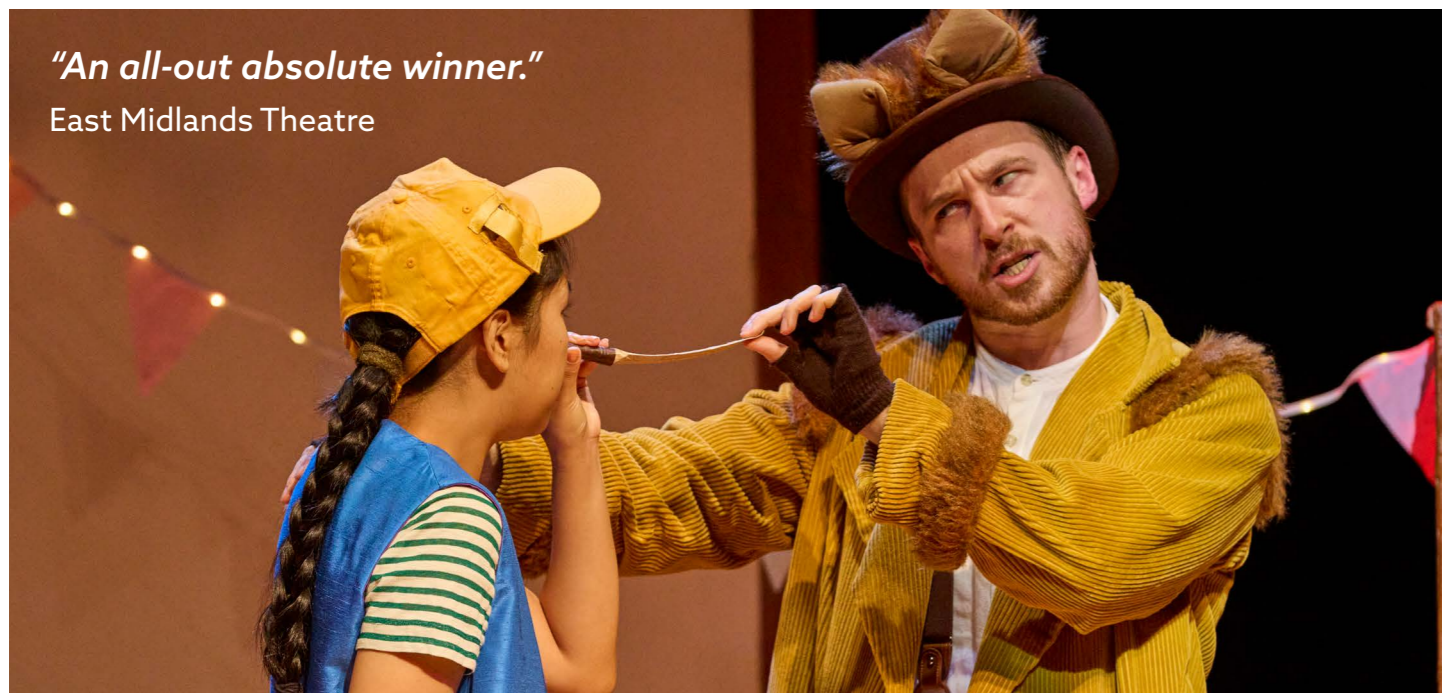
"We had a fantastic time."

"It was brilliant. We've booked for next year."



"An all-out absolute winner."

East Midlands Theatre





UK Productions and Nottingham Playhouse Theatre Company

THE BEEKEEPER OF ALEPPO

by Christy Lefteri
adapted by Nesrin Alrefaai
and Matthew Spangler

Fri 3 – Sat 25 Feb 2023

★★★★ The Telegraph ★★★★★ Theatre & Tonic

What our audiences thought:

"Incredibly moving and powerful performances."
"Beautiful emotional storytelling at its best."
"Heart-breaking and full of hope."



Nottingham Playhouse Theatre Company
DICK WHITTINGTON
by Adam Penford
Fri 25 Nov 2022 – Sat 14 Jan 2023

★★★★ What's Good to Do
★★★★ Impact Nottingham

What our audiences thought:

"A thigh-slapping triumph."
"Amazing show, best one yet."
"An absolute triumph."



A Theatre Royal Stratford East and Ramps on the Moon co-production with Nottingham Playhouse Theatre Company

VILLAGE IDIOT

by Samson Hawkins

Sat 11 – Sat 25 March 2023

★★★★ The Guardian ★★★★★ The Times

What our audiences thought:

"Hilarious in some parts and poignant in others."

"My cheeks hurt from smiling."

"Unpredictable and very entertaining!"



"An outrageously funny, politicised rural comedy loaded with zingers and heart."

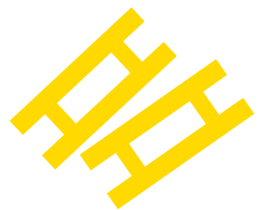
The Times

Josephine Melville

With great sadness, we announced that Josephine Melville passed away suddenly after a performance of the show *Nine Night* in Nottingham. This was a co-production with Leeds Playhouse, and the entire company and both theatres were deeply shocked.

Josephine was a truly wonderful and well-loved person, a revered and deeply respected performer, director, producer, archivist and writer, and a tremendous Maggie in *Nine Night* who we were fortunate to have known and work with.





Total tickets sold
132,920

Under 26 tickets
8,883

Schools and Groups
11,891

Average Yield
£20.64

Pay What You Can Tickets
3,325

50:50 Tickets
1,240

HotHouse Tickets
1,075



Total events
622



Total bookers
29,366

First time bookers
14,985



Earned Income vs Subsidy
£6,818,919
(79%)
VS
£1,450,914
(21%)

DIVERSITY IN THE WORKFORCE WORKING GROUP

Nottingham Playhouse believes that theatre is for everyone, but acknowledges that people of colour, people from Black, Asian and other global ethnic majority groups feel underrepresented at Nottingham Playhouse. In 2020 we set up a Diversity in the Workforce Working Group, with the aim of devising a programme of change to deliver at least 15% representation in the permanent staff make-up of Nottingham Playhouse, to ensure that the workforce represents the diversity of the community we serve. In 2022, an Agent for Change was appointed whose remit included developing employment opportunities for disabled people in the arts.

Our board members identify as

Asian 25%
Black 8.33%
Mixed Race 0%
White 66.67%
Other 0%
Unknown or Prefer Not to Say 0%

Female 41.67%
Male 58.33%
Non-Binary 1%
Unknown or Prefer Not to Say 0%

Non-Disabled 75%
Disabled 16.67%
Unknown or Prefer Not to Say 8.33%

Permanent and Casual Staff as

Asian 1.1%
Black 3.1%
Mixed Race 2.65%
White 83.7%
Other 3.15%
Unknown or Prefer Not to Say 6.3%

Female 63%
Male 33%
Non-Binary 4%
Unknown or Prefer Not to Say 0%

Non-Disabled 43%
Disabled 34%
Unknown or Prefer Not to Say 20%

ANTI-RACISM ACTION GROUP

In March 2021, an Anti-Racism Action Group was set up, with the aim of looking at the wider culture and environment at Nottingham Playhouse. The group is made up of Nottingham Playhouse staff and Trustees, along with co-opted members. Training in Anti-Racism was compulsory for all staff and is ongoing, and included a Refugee Awareness Training session. Information issued to freelance staff was also updated, to ensure the values and ethos of the organisation are made clear. Nottingham Playhouse does not tolerate any form of racial abuse, including verbal or physical, conscious or unconscious. The Anti-Racism Action group set up a reporting Racism Mechanism which allows employees, freelancers, participants, audience members and other visitors to report racist incidents anonymously.

ASSOCIATE ARTISTS

Associate Artists help to shape our programming by providing a sounding board for our artistic team, and by bringing their own unique skills, experience and interests.

Hannah Stone

Hannah Stone is theatre maker, director and producer who has been working in the industry for 15 years. She is Co-Artistic director of The Gramophones Theatre Company which she founded in 2011. The company have created and toured numerous shows, most recently an aerial theatre show **Tarzanna**, and they are currently working on a new show **Aidy the Awesome** about a grandmother and granddaughter superhero duo which was commissioned by Leicester Curve and supported by Arts Council England. The Gramophones make mostly family theatre with a focus on female-led narratives.

Hannah directed **Pinocchio** for Nottingham Playhouse in 2019 and **SHEWOLVES** by Sarah Middleton in 2020. She is also a freelance producer who has worked with The Party Somewhere Else, a collective who put on events that platform womxn led work. She has also produced for Tilly Branson, Beth Shouler and currently Notnow Collective. She lectures in Marketing and Management at DMU, is a consultant producer with the Big House and was recently on the freelance taskforce.



"My autistic son and I had the most magical time at Dick Whittington. Writing this now makes me feel emotional as... sometimes people just turn a blind eye but this didn't happen at your theatre."

Audience Member



CREATIVE ASSOCIATES

Our Creative Associates programme allows artists to develop a significant relationship with Nottingham Playhouse, which supports the development of their career. In 2022-23, we provided one-year attachments for solo theatre-maker Jacob Seelochan and community dance company Next Door Dance.

Breathing Space Bursaries were offered, open to any Amplify artists. Five artists were selected who were provided with £400, to provide them with paid time to support their career development as they saw fit, and an offer of 4 hours bespoke support. Artists received CV surgeries, support with funding applications, dramaturgical advice and support, and mentoring.



Red Ellen

Northern Stage,
25 Mar - 9 Apr 2022
Nottingham Playhouse,
13 Apr - 30 Apr 2022
Royal Lyceum Theatre
Edinburgh,
4 May - 21 May 2022
York Theatre Royal,
24 May 2022 - 28 May 2022

A Midsummer Night's Dream

Nottingham Girls' High School
The Ecclesbourne school,
1 July 2022
St Ann's Allotments,
2 July 2022
Heathfield Primary School,
4 July 2022
Rosslyn Park Primary School,
5 July 2022
Oakfield School, 5 July 2022
Hempshill Hall Primary School,
6 July 2022
Foxwood School,
6 July 2022
Hadyn Primary,
7 July 2022
Robin Hood Primary School,
7 July 2022
Old Basford School,
8 July 2022
Bluecoat Beechdale
Academy, 8 July 2022

Identical

Lowry, Manchester,
19 Aug - 3 Sept 2022

Much Ado About Nothing

Crucible Theatre, Sheffield,
9 Sept - 24 Sept 2022
Leeds Playhouse,
27 Sept - 1 Oct 2022
The REP, Birmingham,
4 Oct - 8 Oct 2022
New Wolsey Theatre, Ipswich,
18 Oct - 22 Oct 2022
Theatre Royal Stratford East, London,
1 Nov - 5 Nov 2022
Salisbury Playhouse,
8 Nov - 12 Nov 2022

Nine Night

Leeds Playhouse,
24 Sept - 15 Oct 2022

Pinocchio

Mercury Theatre Colchester,
7 - 31 Dec 2022

Magical Major Oak

Hyson Green Library,
18 March 2023
Worksop Library,
20 March 2023
Bingham Library,
21 March 2023
Arnold Library,
21 March 2023
Kirkby-in-Ashfield Library,
22 March 2023

West Bridgford Library,
23 March 2023
Beeston Library,
23 March 2023
Hucknall Library,
24 March 2023
Sutton-in-Ashfield Library,
24 March 2023
Mansfield Central Library,
25 March 2023
Retford Library,
27 March 2023
Southwell Library,
28 March 2023
Newark Library,
28 March 2023

Goldilocks and the Three Bears

Middleton Primary School,
6 Jan 2023
Oakfield School,
9 Jan 2023
Seeley Primary School,
11 Jan 2023
Trent College,
12 Jan 2023
Robert Shaw Primary School,
13 Jan 2023
Fairfield School,
17 Jan 2023
Clifton Library,
18 Jan 2023
Ladybay Pre-School,
19 Jan 2023
Willowbrook Primary School,
20 Jan 2023

Renewal Trust, Brendan Lawrence
Sports Centre,
22 Jan 2023
John Blow Primary School,
23 Jan 2023
Kirkby Woodhouse
Primary School, 25 Jan 2023
Fernwood Primary School,
25 Jan 2023
Dovecote Primary School,
27 Jan 2023
Worksop Library,
28 Jan 2023

The Beekeeper of Aleppo

Liverpool Everyman
& Playhouse,
1 - 11 March 2023
Salisbury Playhouse,
21 Mar - 25 Mar 2023
Cardiff, New Theatre,
28 Mar - 1 Apr 2023
Shrewsbury, Theatre Severn,
4 - 8 Apr 2023
Dublin, Gaiety Theatre,
11 - 15 Apr 2023
Salford, The Lowry,
18 - 22 Apr 2023
Glasgow, Theatre Royal,
25 - 29 Apr 2023
London, Richmond Theatre,
2 - 6 May 2023
Norwich Theatre Royal,
9 - 13 May 2023
Cambridge Arts Theatre,
16 - 20 May 2023

Coventry, Belgrade Theatre,
23 - 27 May 2023
Leeds Playhouse,
31 May - 3 June 2023
Newcastle-upon-Tyne,
Theatre Royal,
6 - 10 June 2023
Birmingham, The Rep,
13 - 17 June 2023
Plymouth, Theatre Royal,
20 - 24 June 2023
Guildford Yvonne Arnaud,
27 June - 1 July 2023

Village Idiot

New Wolsey Theatre, Ipswich,
29 Mar - 1 Apr 2023
Theatre Royal Stratford East, London,
13 Apr - 6 May 2023

PRESENTED WORK

Barry Humphries

7 – 9 Apr 2022

LAVA

12 May 2022

Funeral Flowers

13 May 2022

SHEWOLVES

14 May 2022

A Tale of Two Cities - Lost Dog

24 May 2022

Motionhouse – Nobody

26 May 2022

Gyles Brandreth: Break a Leg!

27 May 2022

The King of Reggae - The Man, The Music

28 May 2022

Aidy The Awesome

31 May 2022

Count Arthur Strong - And This Is Me

1 June 2022

Tits, Gits and Little Sh*ts: An Evening with Gill Sims

2 June 2022

An Evening with Reverend Richard Coles & Friends

7 June 2022

Andy Hamilton

8 June 2022

Henning Wehn - It'll All Come Out In The Wash

9 – 10 June 2022

Jinkx Monsoon & Major Scales: Together Again, Again!

11 June 2022

The Mountaintop

14 – 18 June 2022

The Simon and Garfunkel Story

20 June 2022

Kevin Bridges

23 June 2022

MADD presents GALA SHOWCASE

24 -25 June 2022

MADD Graduation 2022

25 June 2022

Henry Blofeld

25 June 2022

Rhymes Against Humanity,

25 June 2022

Help I Sexted My Boss

1 July 2022

It's A Trap! The Improvised Star Wars Show

2 July 2022

Tracy Quaipe – Dance Express

9 – 10 July 2022

Gary Barlow

13 – 15 July 2022

HAWK (Work in Progress),

13 Aug 2022

Sinatra: RAW

31 Aug 2022

The Greatest Magician

17 Sept 2022

Quiet Rebels

19 – 21 Aug 2022

Acoustickle presents Indian Summer

24 Sept 2022

FISHCAT

30 Sept 2022

Saturday Mic Live

1 Oct 2022

An Evening with Graham Norton

4 Oct 2022

Austentatious

5 Oct 2022

Sh!t Faced Shakespeare: Macbeth

6 Oct 2022

Rich Hall

7 Oct 2022

The Great Almighty Gill

7 -8 Oct 2022

Nottingham Global Roots

8 Oct 2022

Al Murray

9 Oct 2022

Sherlock Holmes and the Sign of Four

14 Oct 2022

Bonfire Man

15 Oct 2022

The Colour of Love

18 Oct 2022

An Evening With Phoebe

24 Oct 2022

Jordan Gray: Is It A Bird?

7 Nov 2022

Lucy Worsley - Agatha Christie: A Very Elusive Woman

8 Nov 2022

Scummy Mummies Show

9 Nov 2022

Sing-Along-A-Gareth

10 Nov 2022

Brown Girls Do It Too

11 Nov 2022

Show of Hands

12 Nov 2022

ABBA The Story

16 Nov 2022

Joanne McNally - The Prosecco Express

17 Nov 2022

David O'Doherty: whoa is me

18 Nov 2022

Chris McCausland - Speaky Blinder

19 Nov 2022

Giovanni Pernice - Made in Italy

20 Jan 2023

Guz Khan Live

21 Jan 2023

Wasteland

25 – 26 Jan 2023

ECLIPSE: The Pink Floyd Experience

27 Jan 2023

DIVAS

28 Jan 2023

Ray Bradshaw - Deaf Com 1

28 Feb 2023



Prue Leith - Nothing In Moderation

1 Mar 2023

Banff Mountain Film Festival World Tour

2 Mar 2023

Babatunde Aléshé – Babahood

3 Mar 2023

Sandra Taylor School of Dance – Rise

4 – 5 Mar 2023

A Good Neet Aht

18 Mar 2023

Kate Mosse

29 Mar 2023

The Story of Guitar Heroes

30 Mar 2023

Phil Wang

31 Mar 2023



Amplify Festival 2022

Nottingham Queer Arts Collective Cabaret

26 Oct 2022

In Progress

27 Oct 2022

In Progress Too

28 Oct 2022

The Garden in my Living Room

29 Oct 2022

Ivan Turbinca

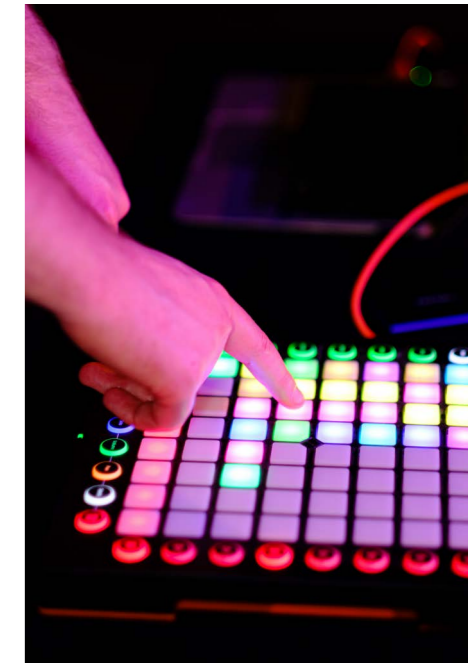
29 Oct 2022

24, 23, 22

29 Oct 2022

Jacob Wants His Grandad

29 Oct 2022



Our Artist Development programme Amplify continued to grow in 2022-23, under the guidance of Craig Gilbert, and latterly in 2022, our new Artist Development Producer, Beccy D'Souza.

In its fifth year, Amplify grew to over 500 members and we were pleased to offer a wide range of practical support to help develop our Members' work, including:

Hours of One-on-One Advice Given over 100 hours

Hours of Donated Rehearsal Space Given Over 105 hours

Hours of One-on-One Dramaturgy Given 45 hours

The Playwrights' Playground continued in 2022. This free, six-month course for writers and theatre-makers from or living in the East Midlands led to some concrete outcomes for participants, including a seed commission from

The Bush; another commission from Graeae and Theatre by the Lake; a commission from commercial producers to co-write a play and another seed commission from Hampstead Theatre.

Our work with partners

Our partnerships offer Members a breadth of opportunities and networks, and included the following:

In Good Company

Leading their new writing initiative, Take Off, along with Wolverhampton Arena.

Open Door

We are a regional partner in this programme which supports young people from economically disadvantaged backgrounds to gain access to drama school by offering free space for auditions, workshops etc.

Graeae BEYOND

A key partner in this project, BEYOND is designed to transform the careers of Deaf and Disabled artists. In 2022 we supported over 20 emerging Disabled artists, offering 1-1 advice, dramaturgical support, work experience, rehearsal space and programming their work.

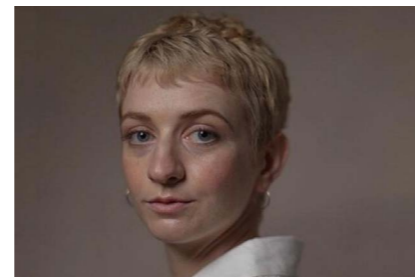
English Touring Theatre

Nationwide Voices is a programme which connects new writers across

the country with a network of venues in creating mid-scale work. It aims to nurture fresh and eclectic voices, to develop stories that speak to new and underserved audiences. A local playwright, Naomi Obeng received a seed commission of £1000 and support through workshops, space in the building to write and introductions to venues.

JMK Trust

Leading workshops for emerging directors.



Phoebe Frances Brown

In April 2022 Phoebe Frances Brown sadly passed away. Phoebe was a member of Major Labia, an alumni Creative Associate Company. We also supported Phoebe in the development of her solo show, *The Glad Game*. In October 2022, we hosted a celebration of Phoebe's life and launched the Phoebe Frances Brown Award, a joint playwriting award offered by Nottingham Playhouse and Hampstead Theatre. Over 400 entries were received for the Award.



Samson Hawkins

A neurodiverse writer who came to our attention through the Ideas Submission window. His first work *Oh For Fucks Sake (I'm In Love With You)* won our Take Off award for new writing and was produced as an audio-play. His play *Village Idiot* was commissioned by Nottingham Playhouse and after developing the work over 5 years, we were delighted to finally stage it in March 2023, to a rapturous reception.

In the Artists Own Words: Jacob Seelochan, Creative Associate:

"Since my Creative Associateship with Nottingham Playhouse, I have attached a producer to my solo-show and am beginning the work to get it back on stage again. The financial support I was given allowed me to collaborate with other artists on the project, who have since brought me in to work on their productions, and the knowledge that I've had/still have a whole institution supporting me as an artist has given me the confidence to approach other theatres with my portfolio of work. For me, 2023 will be about continuing to build the show, and about finally releasing some music!"

Dan Webber, Amplify Festival Artist:

"Presenting a work in progress piece as part of Amplify Festival 2022 was instrumental to the development of my work, allowing me time and space to devise and develop it, as well as the chance to present the piece to audiences and local creatives, who may not have otherwise engaged with it. The feedback given will not only help shape and develop the piece further, but also encourage audiences to engage with it and invest in seeing future versions of the piece as this develops."

John Booker, Playhouse Playwrights' Playground:

"Being part of Amplify has helped me to level up as an artist and a writer. Having access and help from Craig and the wider team is something invaluable. The team are always there to answer questions and offer advice. Being part of the Playwrights Playground helped me to move my career forward and develop my skills as a writer and I've obtained several writing commissions."

Chronic Insanity, Amplify Festival Artists:

"Amplify, and the support it can provide, is an important consideration when Chronic Insanity makes decisions concerning the future of our organisation and artistic output. The Festival has proven invaluable for giving us a place to

present new and innovative ideas and we have presented work at several of them over the years. In 2022 we brought our gig theatre show 24, 23, 22 to the Neville Studio. The fact that it was on at Nottingham Playhouse helped us book a small UK tour for the show in 2023, as well as get it on at the Edinburgh Fringe. Amplify has this amazing power for local artists, in that it can be a great gateway into being supported, nurtured, and platformed by one of the UK's leading regional theatres, the power of which on a creative CV is greater than the sum of the parts of its execution. Put simply, Amplify amplifies East Midlands creatives on a more national scale."

Doug Deans, Playwrights Playground, Amplify Festival Artist:

"I have appreciated the openness in which Amplify has operated under Craig's tenure. It was Craig that linked me up with Omnibus Theatre in Clapham and gave me and Chronic Insanity our first professional London run with our show 24, 23, 22 in 2022. Craig also programmed my work for the Amplify Festival twice, giving both of my shows prime slots in the Neville. I felt like I was treated as a professional and not as an afterthought like some artist development programmes do. I joined Playwright's Playground as part of a successful DYCP bid to develop a new script. As a member, I learned much about what goes into a good play."

At Nottingham Playhouse, our diverse, local community are at the heart of everything we do. A period of significant growth to our programmes means we now run over 60 groups for all ages and abilities.

Highlights from 2022/23 include:

Encore

We ran 123 sessions for people aged over 50, covering contemporary dance, play reading, crafting and making, and much more.

Families

Our ever-popular Half Term Family Festivals saw 584 participants attend across 38 different sessions including free drama sessions, toddler discos, capoeira, theatre skills, play-in-a-day and multi-sensory workshops for learning disabled children.

Little People, Big Adventures at Hyson Green library saw over 30 young children and their parents engage in interactive storytelling workshops each week, culminating in them getting their own book full of all the adventures they have been on at the end of each term.

Careers

18 young people took part in a week's work experience, having the opportunity to work in a range of departments across Nottingham Playhouse.

We hosted 26 backstage tours.

37 young people, aged between 18 – 25 participated in weekly workshops over a 7-month period as part of our

Homegrown professional training programme. Homegrown Performers focused on training and developing their performance skills whilst Homegrown Creatives worked to develop new writing and individual projects. The performers and creatives then came together to deliver a festival of performances in the Neville Studio.

We also hosted 10 placements for University students across all departments.

Adults

InHouse, our theatre company for people who have lived experience of homelessness, continued to invest in participants' skills and wellbeing. Working with theatre maker and director Nic Harvey, they performed public sharing's and a digital performance

Playhouse Platform, our group for learning disabled and autistic adults, performed their own devised show alongside Space to Create, a group for learning disabled and autistic writers and makers. They also participated in Nottingham Light Night parade, volunteered with our Front of House team and had work experience placements assisting delivery of some of our Shine outreach youth theatre groups.

Nottingham Playhouse Choir, our most popular programme, regularly engaged 100 members who met weekly and performed 3 times throughout the year.

Three seasons of highly popular and wide-ranging adult programmes included our Writers Room Group, Daytime and Evening Ensemble Drama Groups, Choir, Art Club and Improv.

Young People

Our Shine programme, which is highly targeted to support the creativity and cultural capital of a wide range of young people including those with disabilities, refugees and asylum seekers, young people in hospital and at risk and those living in challenging circumstances, has continued to grow, with 14 groups running across Nottingham and Nottinghamshire.

New additions in 22/23 included Shine Carrington at the Indian Community Centre Association (ICCA), Shine QMC at the hospital school for young people who are experiencing long term and/or serious ill health and Shine Portland engaging with disabled young adults.

Across the year, we have worked with over 350 young people through Shine, and in addition, every Shine

participant was given tickets to attend our annual Pantomime and another show of their choice.

Our Young Company drama workshops have experienced a huge period of growth, with over 2,700 attendances at the weekly sessions for children aged 5-18.

This year we partnered with local organisations to deliver HAF (Holiday and Food) provisions across Nottingham and Nottinghamshire during the school holidays. We delivered 254 sessions, resulting in 5,268 engagements with young people.

Schools

Over 300 school children took to the main stage to perform scenes from Shakespeare's classic works as part of the annual Schools Massive programme.

Our touring production of **A Midsummer Night's Dream** played in 14 schools across the county.

We created 6 Insight Packs to support schools and parents in exploring our productions in depth.

Our Primary Partners project ran over 2 years from Autumn 2021 to Summer 2023, working with 5 primary schools and engaging students and teachers to embed drama and performance across the curriculum.

Inspire Touring

In partnership with Inspire Libraries, we created **The Magical Major Oak**, a show and workshop for under 5s which toured Nottinghamshire County Libraries. The workshop tour took place 14th-19th November 2022, and the performance tour took place 20th-28th March 2023 and visited 9 venues across Nottinghamshire. Both tours were sold out.

Theatre of Sanctuary

In 2021, we were thrilled to be awarded Theatre of Sanctuary status. As part of this process, in September 2022 we introduced our weekly Conversation Café, where refugees and people seeking asylum can come for a free hot drink, get help with learning English and meet other people.



Nottingham Playhouse provides a warm welcome to everyone, whether they are frequent audience attenders or just take part in one-off participation events. We run various programmes to ensure that financial, social and accessibility barriers do not prevent people from attending.

Playhouse Pass – our Members scheme is at the heart of what we do. Members donate over four times as much as general bookers and are particularly keen supporters of our 50;50 appeal, enabling us to invite others to attend who might otherwise be unable to afford it.

In September 2022 we launched our **Youth Pass**, providing 15-25 year olds with the opportunity to purchase tickets for £5 for in-house and presented work. So far, the scheme has attracted 599 members.

We provide a variety of different performance types for our in-house productions to enable everyone to have an accessible experience for their needs: BSL interpreted, captioned, audio-described, touch tours, reduced capacity performances, relaxed performances and dementia friendly performances.

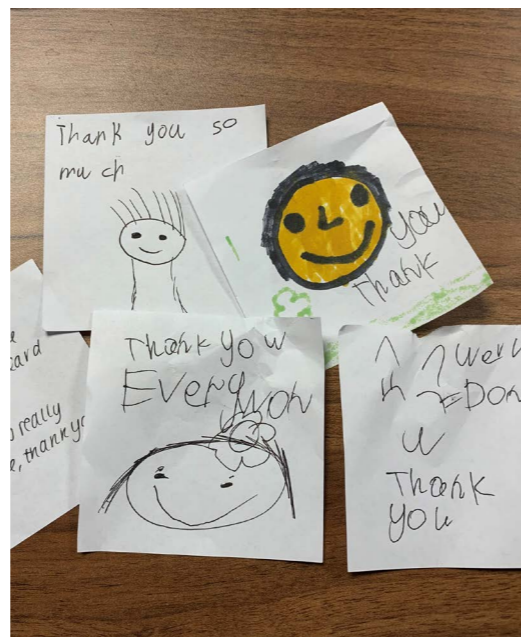
The Beekeeper of Aleppo provides an insight into the type of wrap-around work that goes on around produced work, to ensure that we are optimising opportunities for discussion and involvement by the relevant communities.

- We ran a Food, Friends and Fun event in conjunction with 5 different charities and community groups supporting refugees and people seeking asylum. Drama workshops were run by the Artistic Director of Legal Aliens, a theatre company specializing in migrant work.
- Food was provided by Syrian Vegan, a refugee run catering company
- Families attended and games and playing cards were provided for children
- Participants had the opportunity to attend The Beekeeper of Aleppo technical call to meet the cast and see the set, props and costumes
- Following this, Refugee Roots began running weekly drama workshops at the Playhouse. We have provided in-kind room hire and contacts for drama facilitators.
- Invited the 'real' Beekeeper of Aleppo, Ryad Alsous, to sell his honey in the foyer, raising funds for his Buzz Project.
- During the run, our audiences raised £18.7k for the Smile & Olive foundation to help those affected by the earthquakes in Syria and Turkey.

"It's the first time since I left my home that I have felt heard and seen."

Event Attendee

We also had a joint event with Bromley House Library, with a talk by Anna Ball, NTU Lecturer on literary representations of forced migration. Anna also hosted a pre-show talk with the adapters Matthew Spangler and Nesrin Alrefaai.



Accessible Ticket prices

We provide accessible ticket pricing levels for all produced work. In addition, we have various programmes which ensure access for all.

Our **50:50 appeal** allows us to provide free tickets to those who wouldn't usually be able to access live theatre. Over 8,000 tickets have been donated since it's launch, including £10k worth of tickets to pantomime every year.

"Had it not been for the kindness of the persons concerned with giving us a free ticket, Donald would have lived and died without ever entering a theatre and I wouldn't have had the opportunity to be a child again. It was great."

Nottingham Food Bank beneficiary

Our **HotHouse** scheme offers discounted tickets to charities and not-for-profit organisations across the region. There are no deposits required, no admin fees and delayed payment deadlines all help with this.

We offer **Pay What You Can** performances for all in-house productions – where people can literally pay what they can. Over 1000 PWYC tickets were sold in the year 2022-23, with £1 the most popular price paid.

Embedding accessibility

We are constantly reviewing our access for Deaf and disabled artists and audiences across all of our work. In 2022-23 we reached the final round of the **Digital Culture Network's** Digital Inclusion Award for our project with **My Sight Notts**.

The project involved trialling the use of Virtual Reality (VR) headsets in the theatre. These devices use digital technology to improve the theatre experience for people with sight loss. They allow users to alter brightness, colour contrast, zoom, and the colours of text/background in their vision.

Joan from **My Sight Notts** commented that with the headset

"I went from seeing practically nothing on stage to being able to follow the cast around, determine what they were wearing and what was on the table in the background."



Our work would not be possible without the generosity of our wonderful supporters. Charitable donations from individuals, corporate partners and trusts are all integral in allowing us to have the widest possible reach in our community.



Thanks to our Patrons:

Michael Stokes, Carolyn and Simon Gilby, Victoria and Paul Hart, Tom Huggon, Anna Joyce, Madeline Oliver, David Pedder, David and Jane Stead, and Louise Third MBE

Special thanks to:

Sir Harry Djanogly, Nottinghamshire County Council, The Thomas Farr Charity, The Osberton Trust, The Backstage Trust, The Reed Foundation and David Stewart OBE

Isabelle Abdul-Rahim – Audience Development Officer
James Appleby – Production Casual - Stage
Michelle Arscott – Costume Casual
Ryan Ashe – Production Casual - Stage
Ashlyn Bagshaw – Box Office and Welcome Assistant
Chloe Bancroft – Participation Department Assistant
Emma Barber – Audience Assistant
Thomas Bathurst – Production Casual - LX/Sound
Christine Baxter – Usher
Angela Beere – Chaperone
Martin Berry – Director of Participation
Joanne Blunt – Assistant Producer
Lisa Booth-Blake – Stage Door Keeper
Laura Bos – Costume Casual
Rosanna Brewer – Food & Beverage Assistant
Henry Bridge – Production Casual - LX/Sound
Elliot Briffa – Food & Beverage Assistant
Natalia Bruce – Participation Projects Producer
Andrew Bullett – ICT Manager
Pamela Bullett – Usher
Lorna Burke – Finance and Payroll Officer
Danny Buttfield – Audience Assistant
Louise Carney – Stage Door Keeper
Emilie Carter – Head of Costume
Nikki Charlesworth – Agent For Change
Aikaterini Chatzistavrinou – Food & Beverage Assistant
Jonathan Child – Finance Manager
Tom Codd – Deputy Head of Sound
Adam Collins – Participation Projects Co-ordinator (Education)
Grace Cook – Participation Projects Co-ordinator
Bethany Cooper – Food & Beverage Assistant
Sophie Corner – Food & Beverage Assistant
Bethany Cresswell – Food & Beverage Supervisor
Louis Croft – Food & Beverage Supervisor
Sharon Cross – HR Manager
Alice Dale – Senior Marketing Officer

Katy Daniels – Usher
Royah Darabi – Fundraising and Development Officer
Patricia Davenport – Company Stage Manager
Jonathan Davies – Box Office Manager
Olwen Davies – Stage Door Keeper
Natasha Davies – Production Casual - LX/Sound
Naomi Day – Costume Assistant
Zara Devaney – Food & Beverage Assistant
Clare Devine – Usher
Holly Douglas – Audience Assistant
Beccy D'Souza – Artist Development Producer
Alexander Dugdale – Production Casual - Stage
Tess Ellison – Executive Producer
Tia Elvidge – Participation Projects Producer
Valerie Evans – Head of Administration & HR
Loretta Fearon – Cleaner
Amy-Marie Field – Production Casual - LX/Sound
Heather Flinders – Wardrobe Assistant
Stacey Foster – Usher
Craig Gilbert – Artist Development Producer
Edward Grabiec – Food & Beverage Assistant
Jenny Gray – Audience Assistant
Sian Green – Costume Casual
Philip Gunn – Deputy Head of Construction
Emily Hackett – Deputy Head of Scenic Art
Cassandra Hall – Chaperone
Harry Hall – Production Casual - LX/Sound
Dawn Hammond – Audience Assistant
Megan Hart – Costume Assistant
Alex Hatton – Prop Supervisor
Rachel Healy – Head of Finance
Richard Heapey – Deputy Head of Lighting and Video
Tom Heath – Participation Administrator
Nat Henderson – Box Office Duty Supervisor
Nicola Henlon – Cleaner
William Henshaw – Bars Manager
Lucy Hollinshaw – Head of Scenic Art

Lily Holmes – Welcome Team Duty Manager
Joe Hood-Mooring – Food & Beverage Assistant
Liam Hudson – Casual Technician
Bradley Hunt – Apprentice Technician
Laura Hutchinson – Usher
Cindy Hutchinson – Cleaning Supervisor
Emily Hyslop – Audience Assistant
Joe Jackson – Casual LX & Sound
Michal Janik – Audience Assistant
Lydia Jones – Usher
Alex Jovčić-Sas – Welcome Team Duty Manager
Bethan Keen – Costume Assistant
Anna Kerr – Fundraising and Development Manager
Ryan Kyte – Apprentice Technician
Mark Lacey – Audience Assistant
Francesca Lawson – Stage Door Keeper
Georgie Leckey – Audience Assistant
Laura Lee – Audience Assistant
Geoff Linney – Stage Door Keeper
Isabelle Lister – Scenic Art Casual
Abbie Lloyd – Finance Officer
Leah Lord – Executive Assistant
Julie Loughlin – Chaperone
Alexandra Maharry – Deputy Head of Costume
Katie Marks – Operations Assistant
Eliot Martin – Maintenance Technician
Emily Mason – Audience Assistant
Matthew McAuley – Production Casual - LX/Sound
Kathryn McAuley – Media and Communications Manager
Cian McCafferty – Food & Beverage Assistant
Fiona McFarlane – Box Office and Welcome Assistant
Annis McGee – Welcome Team Duty Manager
Jennifer McNally – Costume Casual
Bridget Merrett – Audience Assistant
Charlie Middlemass – Usher
Matt Miller – Food & Beverage Assistant

Mthokozisi Mkweli – Audience Assistant
Ryan Moore – Technician
Karli-Rose Morris – Food & Beverage Assistant
Catherine Morrow – Audience Assistant
Diane Morton – Audience Assistant
Liam Murphy – Backstage Assistant (Kickstart)
Alex Nankivell – Head of Lighting and Video
Sam Nicholson – Production Casual - Stage
Sara Oakden – Finance & Payroll Officer (maternity cover)
Riya Passmore – Food & Beverage Assistant
Kushal Patel – Deputy Head of Stage
Janet Pavier – Chaperone
Louise Pearson – Recruitment Assistant
Frances Pearson – Senior HR & Administration Officer
Adam Penford – Artistic Director
Lily Pickard – Food & Beverage Supervisor
Abigail Pidgeon – Audience Assistant
Celestene Powell – Audience Assistant
Paul Preston – Usher
Andrew Quick – Head of Production
Ryan Raistrick – Technician
Oliver Read – Production Casual - LX/Sound
Dave Richardson – Stage Door Keeper
Lee Riordan – Production Casual - LX/Sound
Anna Roberts – Scenic Art Casual
Jill Robertshaw – Deputy Production Manager
Maximus Robins – Food & Beverage Assistant
Rosario Rodriguez-Fernandez – Participation Department Assistant
Nathan Rose – Head of Props
Megan Royle – Food & Beverage Assistant
Scarlett Royle – Costume Casual
Catriona Salvini – Technician
Luke Saunders – Production Casual - Stage
Alice Saxton – Participation Projects Co-ordinator
Jennifer Seeley – Audience Assistant

Katerina Senior – Audience Assistant
Jade Severn – Audience Assistant
Alyssa Sharma – Box Office and Welcome Assistant
Michael Sheppard – Audience Assistant
Julie Sheppard – Chaperone
Joanna Sigsworth – Director of Marketing & Communications
Libby Simkins – Scenic Art Casual
Matt Sims – Head of Sound
Rachelle Sinclair – Stage Door Keeper
Suzanne Singleton – Cleaner
Stephanie Sirr – Chief Executive
Oliver Smith – Usher
Julian Smith – Head of Construction
Stewart Smith – Head of Operations
Wesley Smith – Usher
Mesha Smith – Audience Assistant
Harry Smith – Operations Officer
Jamie Smith – Technical and Production Manager
James Stafford – Food & Beverage Assistant
Dawne Stewart – Audience Assistant
June Stewart – Audience Assistant
Josephine Stonley – Audience Assistant
Jess Straub – Development & Sponsorship Manager
Richard Surgay – Sales & CRM Manager
Alyssa Tate – Audience Assistant
Katie Taylor – Food & Beverage Assistant
Rachel Thackray – Audience Assistant
Charlotte Thompson – Box Office Manager
Claire Thompson – Head of Scenic Art
Robert Throup – Participation Associate
Andrew Tinley – Usher
Lewis Tomlinson – Production Casual - Stage
Anthony Topping – Head of Stage
Evie Wakefield – Food & Beverage Supervisor
Jeremy Walker – Box Office Supervisor

Natasha Walker-De Bisschop – Food & Beverage Assistant
Vanessa Walters – Head of Marketing
Olivia Watson – Chaperone
Alyssa Watts – Audience Assistant
Bethany Wear – Chaperone
Suelin Webster – Assistant Carpenter
Bronwen Webster – Chaperone
William Welch – Deputy Head of Lighting & Video
Sarah West – Participation Projects Producer
Francesca Wheeler – Audience Assistant
Jodie Whitchurch – Scenic Art Casual
Paul White – Cleaner
Laura Wolczyk – Technician
Fraser Youngson – Digital Producer
Hannah Zemlak – Props Assistant

Participation freelancers

Isabelle Abdul-Rahim	Olwen Davies
Rebecca Allen	Sharan Dhillon
Zoe Ambrose	Hugh Dichmont
Ali Bakewell	Tia Elvidge
Chloe Bancroft	Tim Evans
Ramy Ben-Fredj	Claire Finn
Sara Bodinar	Erin Fleming
Anna Bond	Helen Goodbarton
Helen Brackenbury	Laura Guthrie
Owen Brindley	Sarah Hailstones
Lorne Brooks	Jane Hart
Becky Brown	Nic Harvey
Jasmine Butler	Anya Hill
Siobhan Cannon Brownlie	Izzy Hollis
Lauren Clark	Tom Hopcroft
Amy Coggle	Sarah Kolawole
Emily Cook	Mya Lawrence-Farrow
Katie Dart	Lloydie Lloyd

Board of Trustees

Mark Aldrich
 Anthony Almeida
 Cllr Stephen Battlemuch
 Andy Batty
 Amanda Farr (Chair)
 Natalie Gasson-McKinley
 Roger Harcourt (from Feb '23)
 Sofia Nazar-Chadwick
 Cllr Anne Peach
 Danielle Russell
 Simrun Sandhu
 Neena Sharma
 Rachel Smith
 Amanda Whittington (from Feb '23)

Pete Lynn	Rosario Rodriguez-Fernandez
Evie Mace	Ines Sampiano
Ben Macpherson	Simon Sanchez
Sarah Manton	Alice Saxton
Abbey Marvin	Alice Saxton
Bryony McCombie Smith	Rachel Scanlon
Matt Miller	Sue Scargill
Mthokozisi Mkweli	Emma Shepherd
Naomi Moore	Melissa May Smith
Nicki Morley	Tim Smith
Sennnie Mudhai	Kate Spencer
Octavia Nyombi	Jamal Sterrett
Evie Osbon	Jane Stockley
Jo Petch	Rob Throup
Hannah Platts	Christina Tsoutsi
Alex Preston	David Wilson Clarke
Jack Pritchard	Elaine Winter
Dawn Richmond-Gordon	

Wider Board Members include:

Cat Arnold	Kurban Kassam	David Stead
David Barter	Ian Lund	David Stewart OBE
David Belbin	Margot Madin	Michelle Vacciana
Tim Challans	Sheila Marriott	Kate Watson
Stephanie Drakes	Nick McDonald	
Rastarella Falade	Caroline McKinlay	
Mark Fletcher	Thulani Molife	
Jackie Gardner	David Orange	
Harvey Goodman	Cllr Michael Payne	
David Greenwood	John Pike	
Cllr Tim Hallam	Rachel Smith	
Emma Hayes	Paul Southby	
Adam Iqbal		

Actors

Raphael Akuwudike – *First Touch*
Lisa Ambalavanar – *Dick Whittington*
Mercedes Assad – *Red Ellen*
Nicholas Bailey – *First Touch*
Rico Bakker – *Identical*
David Bardsley – *Identical*
Sandy Batchelor – *Red Ellen*
Rosanna Bates – *Dick Whittington*
Mark Benton – *Village Idiot*
Julia Bird – *Goldilocks and the Three Bears*
Shereener Browne – *Nine Night*
Reece Carter – *Goldilocks and the Three Bears*
Hannah Cauchi – *Identical*
Christopher Chandler – *Dick Whittington*
Alfred Clay – *The Beekeeper of Aleppo*
Ned Costello – *The Clothes They Stood Up In*
Neal Craig – *First Touch*
James Darch – *Identical*
Andrea Davy – *Nine Night*
Lily Demir – *The Beekeeper of Aleppo*
Charlotte East – *A Midsummer Night's Dream*
John Elkington – *Dick Whittington*
Daneka Etchells – *Much Ado About Nothing*
Laura Evelyn – *Red Ellen*
Lee Farrell – *Much Ado About Nothing*
Maximilian Fairley – *Village Idiot*
Roxy Faridany – *The Beekeeper of Aleppo*
Paige Fenlon – *Identical*
Rosie Glossop – *Identical*
Louise Gold – *Identical*
Claire Goose – *First Touch*
Laura Goulden – *Much Ado About Nothing*
Dominic Griffin – *Identical*
Amy Helena – *Much Ado About Nothing*
Danny Hendrix – *Dick Whittington*
Jordan Isaac – *Identical*
Bettrys Jones – *Red Ellen*
Karina Jones – *Much Ado About Nothing*
Helen Katamba – *Red Ellen*
Kit Kenneth – *Much Ado About Nothing*
Jim Kitson – *Red Ellen*

Daphne Kouma – *The Beekeeper of Aleppo*
Peter Labey – *Village Idiot*
Joseph Langdon – *Village Idiot*
Kevin Lennon – *Red Ellen*
Gabrielle Lewis-Dodson – *Identical*
Ewan Ling – *Dick Whittington*
TJ Lloyd – *Dick Whittington*
Joseph Long – *The Beekeeper of Aleppo*
Leo Long – *Much Ado About Nothing*
Natasha Magigi – *The Clothes They Stood Up In*
Elham Mahyoub – *The Beekeeper of Aleppo*
Aram Mardourian – *The Beekeeper of Aleppo*
Gerard Mcdermott – *Much Ado About Nothing*
Charlie de Melo – *The Clothes They Stood Up In*
Josephine Melville – *Nine Night*
Jo Mousley – *Nine Night*
Rutendo Mushonga – *Identical*
Taku Mutero – *Much Ado About Nothing*
Eileen Nicholas – *Village Idiot*
Fatima Niemogha – *Much Ado About Nothing*
Ellie Nunn – *Identical*
Freya O'Flynn – *A Midsummer Night's Dream*
Chloe Oxley – *First Touch*
Caroline Parker – *Much Ado About Nothing*
Dan Parr – *Much Ado About Nothing*
Shreya Patel – *Much Ado About Nothing*
Richard Peralta – *Much Ado About Nothing*
Daniel Poyser – *Nine Night*
Jack Quarton – *Dick Whittington*
Guy Rhys – *Much Ado About Nothing*
Wayne Rollins – *Nine Night*
Adrian Scarborough – *The Clothes They Stood Up In*
Jacob Seelochan – *A Midsummer Night's Dream*
Michael Smith-Stewart – *Identical*
Edward Spence – *Pinocchio*
Ciaran Stewart – *Much Ado About Nothing*
Perrie Sunuwar – *Pinocchio*
Annabelle Terry – *Dick Whittington*
Sophie Thompson – *The Clothes They Stood Up In*
Emily Tierney – *Identical*
Peter Watts – *A Midsummer Night's Dream*
Claire Weatherall – *Much Ado About Nothing*

Jessica Whitehurst – *Nine Night*
Faye Wiggan – *Village Idiot*
Nadia Williams – *The Beekeeper of Aleppo*
Arthur Wilson – *First Touch*
Ben Wilson – *Much Ado About Nothing*
Natalie Winsor – *Dick Whittington*
Fanos Xenofós – *The Beekeeper of Aleppo*

Child Actors

Lara Aznar – *Identical*
Phoebe Buckley – *Identical*
Holly Clarke – *Identical*
Skye Cooke – *Identical*
Freya Corbett – *Identical*
Ivy Deakin – *Identical*
Taiden Fairall – *First Touch*
Kyla Fox – *Identical*
Nicole Fox – *Identical*
Winter Glasspool – *Identical*
Skye Grimsey – *Identical*
Ellie Hancock – *Identical*
Olivia Hibberts – *Identical*
Daisy Jeffcoate – *Identical*
Olive Jefford – *Identical*
Isabelle Larrey – *Identical*
Saffia Layla – *Identical*
Delinda Lee – *Identical*
Parrine Long – *Identical*
Celene Maddy – *Identical*
Grace Maddy – *Identical*
Isaac McLeod – *First Touch*
Helena Middleton – *Identical*
Eloise Money – *Identical*
Olivia Moore – *Identical*
Kirsten Muzvuru – *Identical*
Olivia Nkala – *Identical*
Sienna Parkin – *Identical*
Eden Patrick – *Identical*
Emme Patrick – *Identical*
Poppy Pawson – *Identical*
Sahasra Peddi – *Identical*
Daisy Perry – *Identical*

Tamarri Peter – *Identical*
Ava Pownall – *Identical*
Savannah Robinson – *Identical*
Sienna Robinson – *Identical*
June Scott – *Identical*
Shanaya Singh – *Identical*
Esmie Smith–Cockayne – *Identical*
Adreanna Steventon–Todd – *Identical*
Amelie Walmsley – *Identical*
Olivia Waterfall – *Identical*
Sephora Wenazo – *Identical*

Nine Night Community Chorus

Richard Brown
James Fields
Veera Kaur
Shirley Levy
Ray Mcleod
Alex Mead
Glen Platt
Rosario Rodriguez–Fernandez
Dionne Rose
Jane Russell
Shereen Thompson
Janice Unwin

Dick Whittington Panto Chorus

Milly Caswell
Louis Gillespie
Nathan Hayward
Emily Jordan
Mairwen Knight
Delinda Lee
Ruby–Jae Leighton
Gracie Lillie
Henry Pavier
Donté Slater
Frey Smith
Esmie Smith–Cockayne
Evie Swetnam–Prince
George Turton

Musicians

Léonie Adams – *Identical*
Becky Brass – *Identical*
Jemima Clarke – *Identical*
Luke Davies – *Identical*
Mat Elliott – *Identical*
Chris Gomersall – *Identical*
Neil Jackman – *Dick Whittington*
Jonathan Kitchen – *Identical*
Ian Maclean – *Dick Whittington*
Katie Punter – *Identical*
Glesni Roberts – *Identical*
John Watterson – *Dick Whittington*

Writers

Nesrin Alrefaai – *The Beekeeper of Aleppo*
Caroline Bird – *Red Ellen*
Natasha Gordon – *Nine Night*
Samson Hawkins – *Village Idiot*
Stuart Paterson – *Identical*
Adam Penford – *Dick Whittington*
Nathaniel Price – *First Touch*
Adrian Scarborough – *The Clothes They Stood Up In*
Matthew Spangler – *The Beekeeper of Aleppo*
Anna Wheatley – *Goldilocks and the Three Bears*

Lyricist

Anthony Drewe – *Identical*

Script Consultant

Ellie Fulcher – *Village Idiot*
Amanda Whittington – *First Touch*

Cultural Consultant

Nesrin Alrefaai – *The Beekeeper of Aleppo*

Directors

Martin Berry – *A Midsummer Night's Dream*
Miranda Cromwell – *The Beekeeper of Aleppo*

Nadia Fall – *Village Idiot*
Rob Hastie – *Much Ado About Nothing*
Amanda Huxtable – *Nine Night*
Jeff James – *First Touch*
Sarah Middleton – *Pinocchio*
Trevor Nunn – *Identical*
Adam Penford – *The Clothes They Stood Up In, Dick Whittington*
Ruby Pugh – *Village Idiot*
Hannah Stone – *Goldilocks and the Three Bears*
Wils Wilson – *Red Ellen*

Designers

Lily Arnold – *Village Idiot*
Camilla Clarke – *Red Ellen*
Charlotte Espiner – *First Touch*
Erin Fleming – *A Midsummer Night's Dream*
Imogen Gulliford – *Goldilocks and the Three Bears*
Robert Jones – *Identical, The Clothes They Stood Up In*
Jonathan Lipman – *Identical*
Peter Mckintosh – *Much Ado About Nothing*
Ruby Pugh – *The Beekeeper of Aleppo*
Mark Walters – *Dick Whittington*
Georgie White – *Pinocchio*
Emma Williams – *Nine Night*

Assistant Designer

Delicia Sorhaindo – *Nine Night*

Wigs & Hair Designer

Richard Mawbey – *Identical*

Costume Associate

Rachael Light – *Village Idiot*

Lighting Designers

Sally Ferguson – *Dick Whittington*
Kai Fischer – *Red Ellen*
Richard Howell – *Village Idiot*
Simisola Majekodunmi – *Nine Night*

Aideen Malone – *The Clothes They Stood Up In*
Ben Ormerod – *The Beekeeper of Aleppo*
Hansjörg Schmidt – *First Touch*
Ian Scott – *Much Ado About Nothing*
Johanna Town – *Identical*
Will Welch – *Goldilocks and the Three Bears, Pinocchio*

Associate / Assistant Lighting Designers

Amelia Hawkes – *Village Idiot (Associate)*
Zoé Ritchie – *First Touch (Assistant)*

Sound Designers

John Biddle – *Nine Night*
Tingyong Dong – *The Beekeeper of Aleppo*
Inês Figueiredo – *A Midsummer Night's Dream*
Adam Fisher – *Dick Whittington*
Paul Gatehouse – *Identical*
Sam Glossop – *Much Ado About Nothing*
Lucy James – *Goldilocks and the Three Bears*
Jasmin Kent Rodgman – *Red Ellen*
Kieran Lucas – *First Touch*
Max Pappenheim – *Village Idiot*

Associate / Assistant Sound Designer

James Melling – *Dick Whittington*
Claire Stamp – *Village Idiot*

Composers / Musical Directors

John Biddle – *Much Ado About Nothing*
Darren Clark – *Pinocchio*
Christella Litras – *Nine Night*
John Morton – *Dick Whittington*
Roshi Nasehi – *Village Idiot*
Jon Nicholls – *The Clothes They Stood Up In*
Max Pappenheim – *Village Idiot*
Jack Quarton – *Goldilocks and the Three Bears*
Tamara Saringer – *Identical*
Elaha Soroor – *The Beekeeper of Aleppo*
George Stiles – *Identical*

Orchestrator

Tom Curran – *Identical*

Orchestral Manager

David Gallagher – *Identical*

Assistant Musical Director

Sarah Morrison – *Identical*

Musical Supervisor

Caroline Humphris – *Identical*

Singing Coach

Jack Quarton – *First Touch*

Copyist

James Humphreys – *Identical*

AV/Video/Projection Designers

Raphael Achache – *Dick Whittington*
Douglas O'Connell – *Identical*
Ravi Deepres – *The Beekeeper of Aleppo*

Associate Film Designer

Luke Unsworth – *The Beekeeper of Aleppo*

Choreographers / Movement Directors

Donna Berlin – *Dick Whittington*
Matt Cole – *Identical*
Kane Husbands – *First Touch*
Carrie-Anne Ingrouille – *Village Idiot*
Patricia Suarez – *Red Ellen*
Akeim Toussaint Buck – *Nine Night*
Kitty Winter – *Pinocchio, Goldilocks and the Three Bears*

Associate Choreographers

Jane McMurtrie – *Identical*
Guy Salim – *Village Idiot*

Fight Directors

Jonathan Holby – *Dick Whittington*
Kaitlin Howard – *Red Ellen*
Kev McCurdy – *Identical, Nine Night*
Bret Yount – *Village Idiot*

Intimacy Directors

Vanessa Coffey – *First Touch*
Christina Fulcher – *Village Idiot*

Dramaturg

Jack Bradley – *Village Idiot*

Dramatherapist

Nikki Disney – *First Touch, The Beekeeper of Aleppo*

Creative Enablers

Darius Gervinskas – *Village Idiot*
Valentine Hanson – *Village Idiot*
Greg Higginson – *Village Idiot*
Ciara Killick – *Village Idiot*

Associate Directors

Nadia Emam – *The Beekeeper of Aleppo*
Martha Geelan – *Identical*
Khadijah Ibrahiim – *Nine Night*
Evangeline Osbon – *Dick Whittington*
Timothy Trimmingham Lee – *Village Idiot*

Assistant Directors

Joss Birkett – *The Clothes They Stood Up In*
Bex Bowsher – *Red Ellen*
Natalia Bruce – *A Midsummer Night's Dream*
Alexandra Whiteley – *Much Ado About Nothing*

Casting Directors

Jane Anderson CDG – *The Clothes They Stood Up In*
Lucy Casson CDG – *Nine Night*
Jo Hawes CDG – *Identical*
Polly Jerrold CDG – *First Touch*
Jacob Sparrow – *Village Idiot*
Christopher Worrall – *The Beekeeper of Aleppo*

Illusion Consultants

Sam Lupton – *Village Idiot*

Voice / Dialect / Accent Coaches

Khaled Abunaama – *The Beekeeper of Aleppo*
Esi Acquah-Harrison – *Nine Night*
Kate Godfrey – *Village Idiot*
Marianne Samuels – *The Clothes They Stood Up In, The Beekeeper of Aleppo*
Salvatore Sorce – *First Touch*

Costume Supervisors

Emilie Maddison Berger – *First Touch*
Maddy Edis – *Identical*
Louise Smith – *A Midsummer Night's Dream, Pinocchio*

Chaperones

Jayne Avci – *Identical*
Angela Beere – *Identical, Dick Whittington, First Touch*
Edel Connelly – *Identical*
Julie Loughlin – *Identical, Dick Whittington, First Touch*
Olu Osilewe – *Identical*
Jan Pavier – *Identical, Dick Whittington, First Touch*
Julie Sheppard – *Identical, Dick Whittington, First Touch*
Ian Spirydon – *Identical*
Anne Vosser – *Identical*
Olivia Watson – *Identical, Dick Whittington, First Touch*
Bethany Wear – *Dick Whittington*
Bronwen Webster – *Dick Whittington*
Lucy Woolley – *Identical, Dick Whittington*

BSL Directors

Emily Howlett – *Much Ado About Nothing*

BSL Consultant

Brian Duffy – *Much Ado About Nothing*

BSL Interpreters

Nikki Champagnie Harris – *Red Ellen*

Sarah Cox – *Much Ado About Nothing*

Rebekah Cupit – *The Clothes They Stood Up In, Dick Whittington*

Emma Dawber – *Much Ado About Nothing*

Clare Edwards – *Nine Night*

Max Gartery – *Much Ado About Nothing*

Ali Green – *A Midsummer Night's Dream, Identical, Dick Whittington*

Nikki Harris – *The Beekeeper of Aleppo*

Kate Labno – *Dick Whittington*

Cara Lawless – *First Touch*

Lauren Lister – *Much Ado About Nothing*

Max Marchewicz – *Goldilocks and the Three Bears*

Ryan McLean – *Village Idiot*

Kat Pearson – *Much Ado About Nothing*

Dave Wycherley – *Much Ado About Nothing*

Audio Description Director

Chloe Clarke – *Much Ado About Nothing*

Audio Describers

Nikki Champagnie Harris – *First Touch*

Rebekah Cupit – *Red Ellen*

Michael Davies – *Red Ellen*

Jane Edwards – *Identical, Dick Whittington, The Beekeeper of Aleppo*

William Elliott – *Red Ellen, First Touch*

Cara Lawless – *Red Ellen*

Krista Norris – *First Touch*

Mo Pickering-Symes – *The Clothes They Stood Up In, Village Idiot*

Captions Consultant

Emily Howlett – *Goldilocks and the Three Bears*

Captions Creator

Cara Lawless – *Village Idiot*

Captioners

Michael Davies – *Red Ellen*

Theo Hornsby-Walsh – *First Touch*

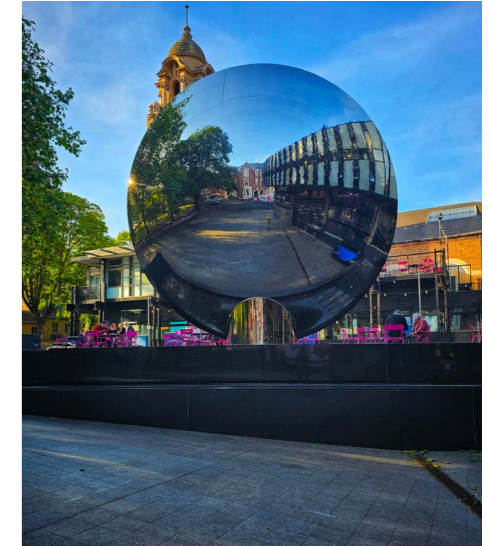
Cara Lawless – *Red Ellen, First Touch, Identical, The Clothes They Stood Up In, Dick Whittington, Goldilocks and the Three Bears, The Beekeeper of Aleppo, Village Idiot*

Jack Quarton – *Village Idiot*

Matthew Radway – *Village Idiot*

Creative Captioner

Raphael Achache – *Goldilocks and the Three Bears*



NOTTINGHAM PLAYHOUSE

Company Registration No 5384418
Charity No 1109342

Nottingham Playhouse
Wellington Circus
Nottingham
NG1 5AF



@nottmplayhouse



Nottingham Playhouse



Supported using public funding by
**ARTS COUNCIL
ENGLAND**



Nottingham
City Council