

Access Nottingham

The Real History of Deaf & disabled communities in Nottinghamshire



Visual Story

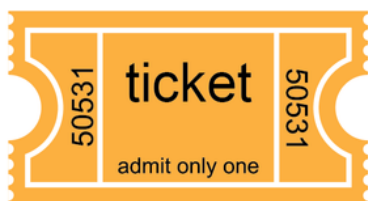
Welcome to Access Nottingham at Nottingham Playhouse



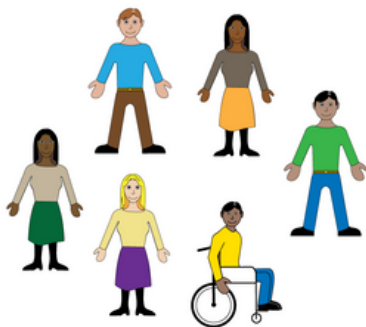
You are visiting a theatre called Nottingham Playhouse.



In the entrance you will see our Box Office.



This is where people buy or collect tickets.



Sometimes there are lots of people here.

The Stall Foyer



The first part of the exhibition is in the stalls foyer. This is what the stalls foyer looks like.

There will be an introduction stand and exhibits by Nottingham Disabled People's Movement and Notts Federation for the Blind.

The Lower Foyer



Downstairs from the stalls foyer is the lower foyer. This is what the lower foyer looks like.

Here there will be exhibits by Disability Support and Nottingham Playhouse.

The Upper Foyer



On the top floor is the upper foyer. This is what the upper foyer looks like.

Here there will be exhibits by My Sight Notts, Nottinghamshire Deaf Society, and Portland College.

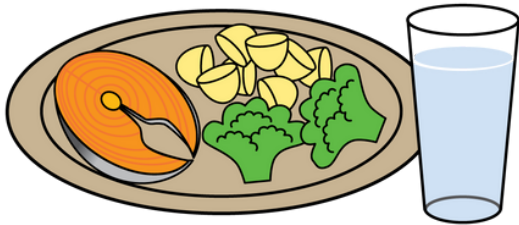
Company

The room next to Box Office is called Company.

When this room is open, you can watch videos from the exhibition including British Sign Language (BSL) translated exhibits.

If this room is closed, you can find these videos on the [Nottingham Playhouse YouTube channel](#).

Refreshments



There are bars on the upper and stalls foyers. There is also a bar and seating area in Company. You can buy food and drinks here when there is a show on.



This is what the bars look like.

Key Words and Symbols



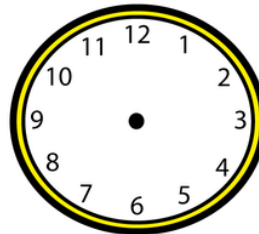
Community



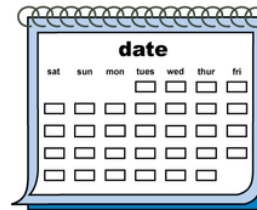
History



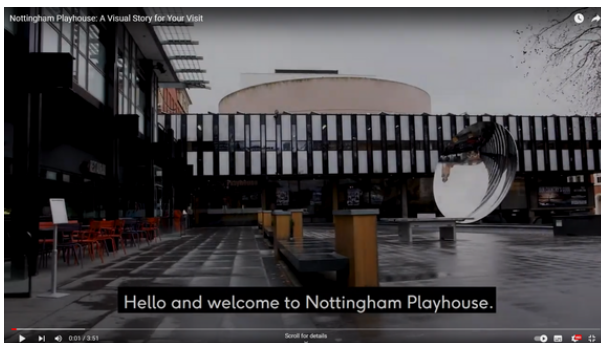
Perception



Time



A Video Visual Story for Your Visit



A video visual story is available on our website.

Here you can see the auditorium, foyer spaces and Box Office area. Visit the Relaxed Performances webpage to see it.

<https://nottinghamplayhouse.co.uk/your-visit/access/relaxed-performances/>